

# FLOS

09.7700.14A Black

## UT Spot Track Ø 57 GA

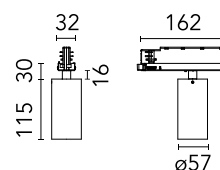
Designed by FLOS Architectural, UT S



Spotlight to be installed on 3-phase track with LED light source. 220-240V, 50-60Hz power supply integrated.

Are you a professional and your project needs consulting and support?

BOOK AN APPOINTMENT



### Main specifications

Mounting	Track
Environments	Indoor dry location
Light Source Type	LED
LED type	LED array
Lamp category	LED
Ilcos	No
Bulb finish	Clear
Number of heads	1
Power (W)	23.5
System power (W)	23.2
Source flux (lm)	2498
System flux (lm)	1255

### Physical

Colour	Black
Trim	No
Orientation	Adjustable
Rotation (°)	360
Longitudinal tilting (°)	90
Spot diameter (mm)	57
Net weight (kg)	0.57
IP internal	20
IP external	20

### Download

Mounting instructions [Download PDF](#)

### Photometric Files

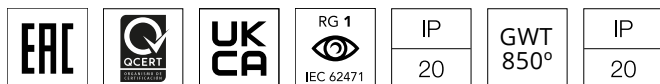
LDT / IES [Download ZIP](#)

### Technical Drawings

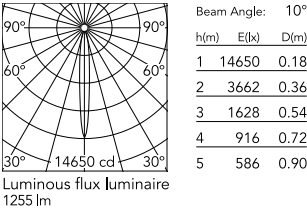
2D [Download ZIP](#)

3D [Download ZIP](#)

[Bim](#) [Download ZIP](#)



## Schematic light drawing



## Photometric

Lighting type	Direct
Light distribution	Symmetric
CCT (K)	3000
CRI>	80
Beam angle C0-180 (°)	10
Beam angle C90-270 (°)	10

## Electrical

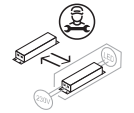
Insulation class	II
Frequency (Hz)	50/60
Main voltage (Vac)	220-240V
Alternating current voltage (Vac)	230
LED current (mA)	550
Driver	Integrated
Dimmable	No
Dimming type	Non Dimmable
Dimming interface	Not Dimmable
Emergency type	No

## Ecodesign and Energy Labelling

This product contains a light source of energy efficiency class F



Replaceable (LED only) light source by a professional



Replaceable control gear by a professional

## Notes

Screening crosspiece, lenses and Honeycomb directly installable on the head of the luminaire without needing any fastening accessory. FLOS three-phase lighting track luminaires are designed and fully tested for tracks recommended by FLOS. Compatibility is guaranteed with three-phase track produced by Nordic Aluminium. Compatibility with Eutrac under request.

Accessories & Power Supply



OPTIONAL  
Accessory  
Optical

08.0526.00

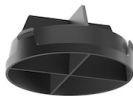
Snoot shielding cone



OPTIONAL  
Accessory  
Optical

08.8428.00

Honeycomb



OPTIONAL  
Accessory  
Optical

08.8429.00

Screening crosspiece



OPTIONAL  
Accessory  
Optical

08.8431.00

Elliptical lens



OPTIONAL  
Accessory  
Optical

08.8432.00

Flood lens



OPTIONAL  
Accessory  
Optical

08.0526.40

Snoot shielding cone



OPTIONAL  
Accessory  
Optical

08.0526.BW

Snoot shielding cone