

# FLOS

09.4481.14A Black

## UT Spot Track Ø 57

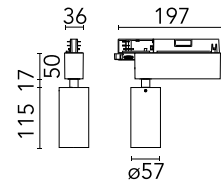
Designed by FLOS Architectural, 2017



Spotlight to be installed on 3-phase track. with LED light source. 220-240V, 50-60Hz power supply integrated.

Are you a professional and your project needs consulting and support?

[BOOK AN APPOINTMENT](#)



### Main specifications

|                   |                     |
|-------------------|---------------------|
| Mounting          | Track               |
| Environments      | Indoor dry location |
| Light Source Type | LED                 |
| LED type          | LED array           |
| Lamp category     | LED                 |
| Iicos             | No                  |
| Bulb finish       | Clear               |
| Number of heads   | 1                   |
| Power (W)         | 23.2                |
| System power (W)  | 23.2                |
| Source flux (lm)  | 2592                |
| System flux (lm)  | 1094                |

### Physical

|                          |            |
|--------------------------|------------|
| Colour                   | Black      |
| Trim                     | No         |
| Orientation              | Adjustable |
| Rotation (°)             | 360        |
| Longitudinal tilting (°) | 90         |
| Spot diameter (mm)       | 57         |
| Net weight (kg)          | 0.57       |
| IP internal              | 20         |
| IP external              | 20         |

### Download

[Mounting instructions](#) ZIP

### Photometric Files

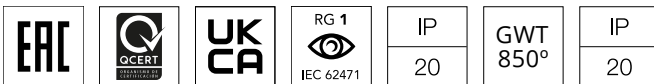
[LDT / IES](#) ZIP

### Technical Drawings

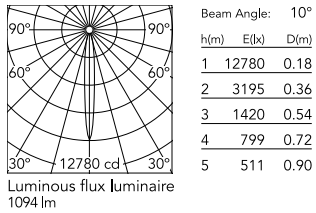
[2D](#) ZIP

[3D](#) ZIP

[Bim](#) ZIP



## Schematic light drawing



## Photometric

|                        |           |
|------------------------|-----------|
| Lighting type          | Direct    |
| Light distribution     | Symmetric |
| CCT (K)                | 4000      |
| CRI>                   | 90        |
| Beam angle C0-180 (°)  | 10        |
| Beam angle C90-270 (°) | 10        |

## Electrical

|                                   |              |
|-----------------------------------|--------------|
| Insulation class                  | II           |
| Frequency (Hz)                    | 50/60        |
| Main voltage (Vac)                | 220-240V     |
| Alternating current voltage (Vac) | 230          |
| LED current (mA)                  | 550          |
| Driver                            | Integrated   |
| Dimmable                          | No           |
| Dimming type                      | Non Dimmable |
| Dimming interface                 | Not Dimmable |
| Emergency type                    | No           |

## Ecodesign and Energy Labelling



Replaceable (LED only) light source by a professional



Replaceable control gear by a professional

## Notes

Screening crosspiece, lenses and Honeycomb directly installable on the head of the luminaire without needing any fastening accessory. FLOS three-phase lighting track luminaires are designed and fully tested for tracks recommended by FLOS. Compatibility is guaranteed with three-phase track produced by Nordic Aluminium. Compatibility with Eutrac under request.

## Accessories & Power Supply



OPTIONAL  
Accessory

Optical

08.0526.00

Snoot shielding cone

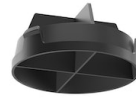


OPTIONAL  
Accessory

Optical

08.8428.00

Honeycomb

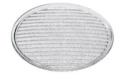


OPTIONAL  
Accessory

Optical

08.8429.00

Screening crosspiece



OPTIONAL  
Accessory

Optical

08.8431.00

Elliptical lens



OPTIONAL  
Accessory

Optical

08.8432.00

Flood lens



OPTIONAL  
Accessory

Optical

08.0526.40

Snoot shielding cone



OPTIONAL  
Accessory

Optical

08.0526.BW

Snoot shielding cone