

FLOS

09.4470.30A White

UT Spot Ceiling Ø 57

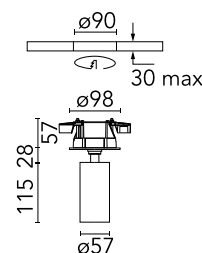
Designed by FLOS Architectural, 2017



Spotlight to be installed on ceiling with LED light source. 220-240V, 50-60Hz remote power supply included.

Are you a professional and your project needs consulting and support?

[BOOK AN APPOINTMENT](#)



Main specifications

| | |
|-------------------|---------------------|
| Mounting | Ceiling surface |
| Environments | Indoor dry location |
| Light Source Type | LED |
| LED type | LED array |
| Lamp category | LED |
| Iicos | No |
| Bulb finish | Clear |
| Number of heads | 1 |
| Power (W) | 23.2 |
| System power (W) | 23.2 |
| Source flux (lm) | 2179.6 |
| System flux (lm) | 1094 |

Physical

| | |
|--------------------------|------------|
| Colour | White |
| Trim | No |
| Orientation | Adjustable |
| Rotation (°) | 360 |
| Longitudinal tilting (°) | 90 |
| Spot diameter (mm) | 57 |
| Net weight (kg) | 0.59 |
| IP internal | 20 |
| IP external | 20 |

Download

[Mounting instructions](#) PDF

[Mounting instructions](#) PDF

Photometric Files

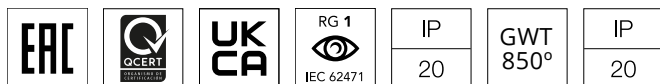
[LDT / IES](#) ZIP

Technical Drawings

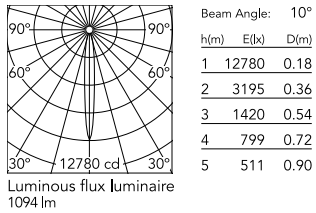
[2D](#) ZIP

[3D](#) ZIP

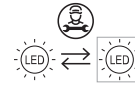
[Bim](#) ZIP



Schematic light drawing



Ecodesign and Energy Labelling



Replaceable (LED only)
light source by a
professional



Replaceable control
gear by a professional

Photometric

| | |
|------------------------|-----------|
| Lighting type | Direct |
| Light distribution | Symmetric |
| CCT (K) | 4000 |
| CRI> | 90 |
| Beam angle C0-180 (°) | 10 |
| Beam angle C90-270 (°) | 10 |

Electrical

| | |
|-----------------------------------|-----------------|
| Insulation class | II |
| Frequency (Hz) | 50/60 |
| Main voltage (Vac) | 220-240V |
| Alternating current voltage (Vac) | 230 |
| LED current (mA) | 550 |
| Driver | Remote included |
| Dimmable | No |
| Dimming type | Non Dimmable |
| Dimming interface | Not Dimmable |
| Emergency type | No |

Notes

Screening crosspiece, lenses and Honeycomb directly installable on the head of the luminaire without needing any fastening accessory.

Accessories & Power Supply



OPTIONAL
Accessory

Optical

08.0526.00

Snoot shielding cone

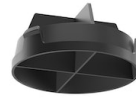


OPTIONAL
Accessory

Optical

08.8428.00

Honeycomb



OPTIONAL
Accessory

Optical

08.8429.00

Screening crosspiece



OPTIONAL
Accessory

Optical

08.8431.00

Elliptical lens



OPTIONAL
Accessory

Optical

08.8432.00

Flood lens



OPTIONAL
Accessory

Optical

08.0526.40

Snoot shielding cone



OPTIONAL
Accessory

Optical

08.0526.BW

Snoot shielding cone