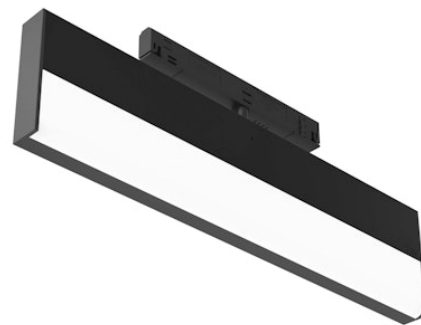


FLOS

09.7501.14A Black

UT Pro Wall-Washer

Designed by FLOS Architectural, 2017



LED - Top LED - 25.5W - 1700lm - 4000K - CRI> 90 - Beam° 36

Wall-Washer lighting module to be installed in Tracking Power profile with LED light source. 220-240V power supply integrated.

Are you a professional and your project needs consulting and support?

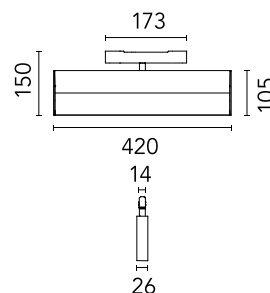
BOOK AN APPOINTMENT

Main specifications

| | |
|------------------------|---------------------|
| Mounting | Track |
| Environments | Indoor dry location |
| Light source type | LED |
| Light sources included | Yes |
| LED type | Top LED |
| Lamp category | LED |
| Number of lamps | 1 |
| Power (W) | 25.5 |
| Source flux (lm) | 3154 |
| Lumen Output (lm) | 1700 |

Physical

| | |
|--------------------------|------------|
| Colour | Black |
| Trim | No |
| Orientation | Adjustable |
| Rotation (°) | 360 |
| Longitudinal tilting (°) | 15 |
| Length (mm) | 420 |
| Net weight (kg) | 1.05 |
| IP internal | 20 |
| IP external | 20 |



Download

Mounting instructions [Download PDF](#)

Photometric Files

LDT / IES [Download ZIP](#)

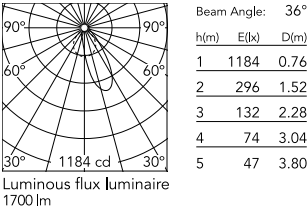
Technical Drawings

2D [Download ZIP](#)

3D [Download ZIP](#)



Schematic light drawing



Photometric

| | |
|------------------------|------------|
| Lighting type | Direct |
| Light distribution | Asymmetric |
| CCT (K) | 4000 |
| CRI> | 90 |
| Beam angle C0-180 (°) | 36 |
| Beam angle C90-270 (°) | 75 |
| Extreme cut off | No |

Electrical

| | |
|--------------------|--------------|
| Insulation class | I |
| Frequency (Hz) | 50/60 |
| Main voltage (Vac) | 220-240 |
| Power supply | Integrated |
| Dimmable | No |
| Power supply type | Non Dimmable |
| Emergency | No |