

# FLOS

09.4512.14A Black

## UT Downlight Trim Ø 57 Non Dimmable

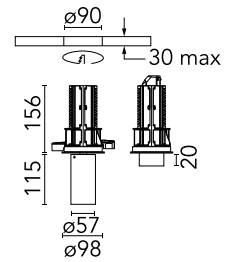
Designed by FLOS Architectural, 2017



Recessed luminaire with LED light source. 220-240V, 50-60Hz remote power supply included.

Are you a professional and your project needs consulting and support?

[BOOK AN APPOINTMENT](#)



### Main specifications

|                  |                     |
|------------------|---------------------|
| Mounting         | Ceiling recessed    |
| Environments     | Indoor dry location |
| LED type         | LED array           |
| Lamp category    | LED                 |
| Ilcos            | No                  |
| Number of heads  | 1                   |
| Power (W)        | 18                  |
| Source flux (lm) | 2008.2              |
| System flux (lm) | 995                 |

### Physical

|                          |            |
|--------------------------|------------|
| Colour                   | Black      |
| Trim                     | No         |
| Orientation              | Adjustable |
| Rotation (°)             | 360        |
| Longitudinal tilting (°) | 90         |
| Net weight (kg)          | 0.73       |
| IP internal              | 20         |
| IP external              | 20         |

### Download

Mounting instructions [↓ PDF](#)

### Photometric Files

LDT / IES [↓ ZIP](#)

### Technical Drawings

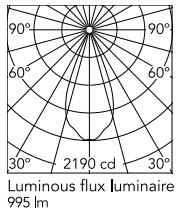
2D [↓ ZIP](#)

3D [↓ ZIP](#)

[↓ ZIP](#) Bim



## Schematic light drawing



Beam Angle: 43°

| h(m) | E(lx) | D(m) |
|------|-------|------|
| 1    | 2190  | 0.79 |
| 2    | 548   | 1.58 |
| 3    | 243   | 2.37 |
| 4    | 137   | 3.16 |
| 5    | 88    | 3.95 |

### Photometric

|                        |           |
|------------------------|-----------|
| Light distribution     | Symmetric |
| CCT (K)                | 3000      |
| CRI>                   | 80        |
| Beam angle C0-180 (°)  | 43        |
| Beam angle C90-270 (°) | 43        |

### Electrical

|                    |                 |
|--------------------|-----------------|
| Insulation class   | II              |
| Frequency (Hz)     | 50/60           |
| Main voltage (Vac) | 220.00          |
| Driver             | Remote included |
| Dimmable           | No              |
| Dimming type       | Non Dimmable    |
| Emergency type     | No              |

### Notes

Screening crosspiece, lenses and honeycomb directly installable on the head of the luminaire without needing any fastening accessory.

## Accessories & Power Supply



OPTIONAL  
Accessory

Optical

08.0526.00

Snoot shielding cone

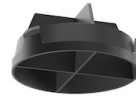


OPTIONAL  
Accessory

Optical

08.8428.00

Honeycomb



OPTIONAL  
Accessory

Optical

08.8429.00

Screening crosspiece



OPTIONAL  
Accessory

Optical

08.8431.00

Elliptical lens



OPTIONAL  
Accessory

Optical

08.8432.00

Flood lens



OPTIONAL  
Accessory

Optical

08.0526.40

Snoot shielding cone



OPTIONAL  
Accessory

Optical

08.0526.BW

Snoot shielding cone