

■ F7542031 Matte Black

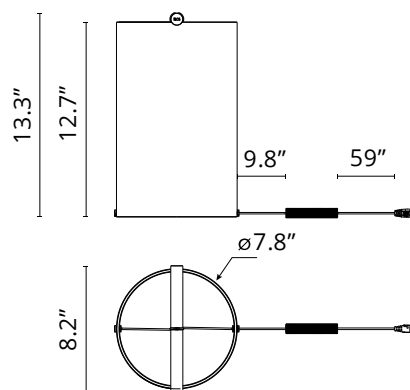
To-Tie T2

Designed by Guglielmo Poletti, 2022

7W - 336lm - 2700K - CRI> 90



Designed by Guglielmo Poletti Table lamp providing diffused light. Clear glass cylindrical lamp body available in multiple sizes. The handle is made of aluminum and also acts as a light emitter. Multi-led diffuser in specially designed white polycarbonate to avoid the Multi Shadow effect and dazzle. High efficiency LED source with a lifetime of more than 50.000 hours. Electric cable of useful length 180 cm, covered in black fabric and equipped with dimmer switch for ON/OFF and adjustment of the light flow between 10-100%. Plug-in power supply with interchangeable plugs. To-Tie is a future-proof lamp as no glue is used to assemble its different parts. The product can therefore be separated, replaced individually, and recycled separately.



Are you a professional and your project needs consulting and support?

BOOK AN APPOINTMENT

Main specifications

EAN	8059607047620
Mounting	Table
Environments	Indoor dry location
Light Source Type	LED
Light sources included	Yes
LED type	LED Module
Power (W)	7
System flux (lm)	336

Physical

Color	Matte Black
Length (in)	8.27
Cord color	Black
Net weight (lb)	5.51
Package height (in)	17.32
Package width (in)	11.61
Package length (in)	11.61
Package volume (in)	2336.67
IP internal	20
H2O stop	No

Download

Mounting instructions  PDF

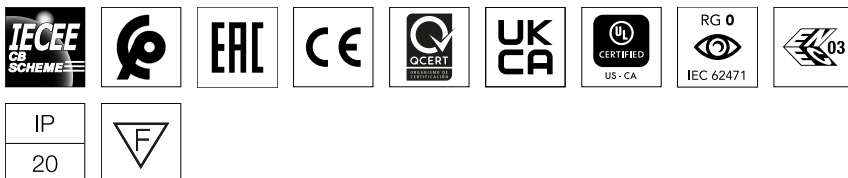
Photometric Files

LDT / IES  ZIP

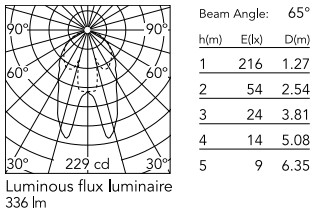
Technical Drawings

2D  ZIP

3D  ZIP



Schematic light drawing



Photometric

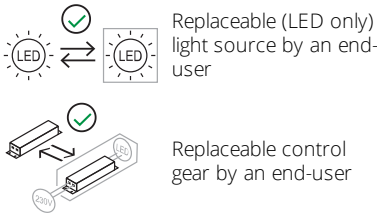
Light distribution	Asymmetric
CCT (K)	2700
CRI>	90

Electrical

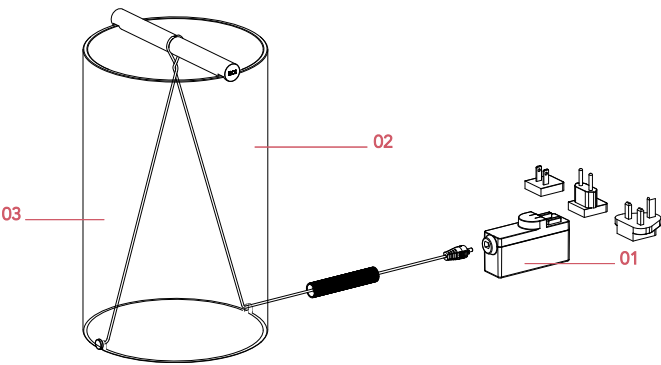
Insulation class	III
Frequency (Hz)	50/60
Main voltage (Vac)	24
LED current (mA)	500
Driver	Remote included
Dimmable	Yes
Dimming type	Electronic 24V
Dimming interface	Dimmer Integrated
Plug type	Type G, Type A, Type C

Ecodesign and Energy Labelling

This product contains a light source of energy efficiency class F



Spare Parts



00.	Led Board with connectors for To-Tie Table 1-Table 2	RF7541200
01.	Black plug assembly kit & 24V driver	RF6600230
02.	Assembly Body for To-Tie Table 2 Black	RF7542131
03.	Base for To-Tie Table 2	RF7542100



RF7541200

Led Board with connectors for
To-Tie Table 1-Table 2



RF6600230

Black plug assembly kit & 24V
driver



RF7542131

Assembly Body for To-Tie Table 2
Black



RF7542100

Base for To-Tie Table 2