

The Tracking Magnet Suspension Up&Down Profile Casambi / Dali / 1-10V compatible

Designed by FLOS Architectural, 2017



Electrical/mechanical profile for suspended installations.

Are you a professional and your project needs consulting and support?

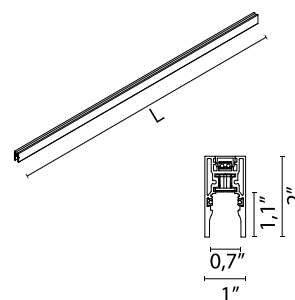
[BOOK AN APPOINTMENT](#)

Main specifications

Mounting	Suspension
Environments	Indoor dry location
Light sources included	no
LED type	Top LED
Lamp category	LED
Number of lamps	1
Power (W)	16.5
System power (W)	16.3
Source flux (lm)	1633.4
System flux (lm)	1048
Efficacy (lm/W)	64.29

Physical

Color	White
Trim	No
Field cuttable	No
Length (in)	98.42
Net weight (lb)	7.67
IP internal	20
IP external	20



Download

Family spec sheet	ZIP
Mounting instructions	PDF

Photometric Files

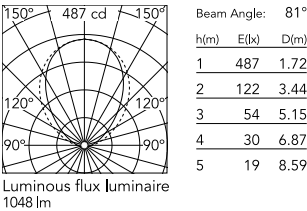
LDT / IES	ZIP
-----------	---------------------

Technical Drawings

2D	ZIP
3D	ZIP



Schematic light drawing



Photometric

Lighting type	Indirect
Light distribution	Asymmetric
CCT (K)	3000
CRI>	80
McAdam steps (SDCM)	2
LED Life / Failure Ratio	L80B50 > 50.000h (Tc=85°C)
Beam angle C0-180 (°)	81
Beam angle C90-270 (°)	96
UGR _L	<10

Electrical

Insulation class	III
Forward voltage (V)	48
LED current (mA)	70
Driver	Remote excluded
Dimmable	Yes
Dimming type	Non Dimmable, Dimmable
Emergency type	No

Notes

The linear elements in the Up&Down version include indirect LED lighting in the upper part of the profile. The magnetic profile and the Up lighting must be powered with the same equipment. Version compatible with "On board dimmer" luminaries and version compatible with system controlled luminaries (DALI, 1-10V, FLOS SMART CONTROL) available. Corners, connectors and accessories common for the two profile versions. Both versions have lengths of 1m-3m. The profiles cannot be cut. The covers must be ordered separately. 3m power cable included in all the linear power products. Suspension accessories (steel cable and rods) should be ordered separately. 90° corners available in the same plan (symmetrical element for left and right corners), common in Up&Down and Down versions. Not provided for connection to driver. The corners of the Suspended versions of Tracking Magnet do not have indirect lighting. Indirect lighting is controlled with a common circuit to the direct lighting.

Accessories & Power Supply



REQUIRED
Power supply

LEDSB60W48V-NDM-U01
LED Driver, 48VDC, 60W, Non-Dimming, 120-277V



REQUIRED
Power supply

LEDSB60W48V-NDM-D01
LED Driver, 48VDC, 60W, Non-Dimming, 120-277V



REQUIRED
Power supply

Electrical
LEDSB30W48V-NDM-D01
LED power supply source for remote installation, 48V/30W



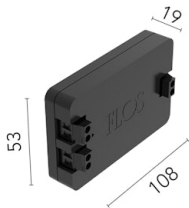
REQUIRED
Power supply

LEDSB40W48V-NDM-U01
LED Driver, 48VDC, 40W, Non-Dimming, 120-277V



REQUIRED
Power supply

LEDSB96W48V-NDM-D01
LED Driver, 48VDC, 96W, Non-Dimming, 120-277V



REQUIRED
Power supply

Electrical
08.0613.14A
Dimmable control box 1-10V, 24/48V. For remote installation.



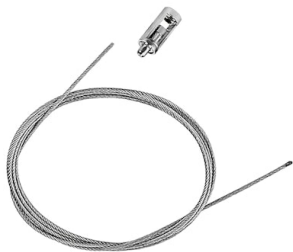
REQUIRED
Accessory

06.5026.40
The Tracking Magnet Suspension Up&Down Profile End Caps



REQUIRED
Accessory

Electrical
08.0612.14
The Tracking Magnet Profile Intermediate Connector Straight



REQUIRED
Accessory

Installation

08.8634.00

4m suspension steel cable



REQUIRED
Accessory

Installation

60.3014.11

Suspension rod with 1m rose.
M6 thread

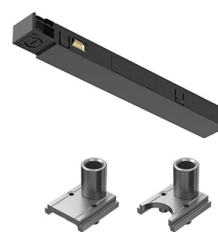


REQUIRED
Accessory

Installation

60.3014.14

1 m suspension rod with ceiling
rose kit. M6 thread



REQUIRED
Accessory

Electrical

08.0626.00

Power connector



REQUIRED
Accessory

Installation

08.0627.00

Intermediate suspension kit for
joining profiles



REQUIRED
Accessory

Installation

60.3097.11

1 m suspension rod with ceiling
rose with m6 thread



REQUIRED
Accessory

Installation

60.3097.14

1 m suspension rod extension
set with m6 thread



REQUIRED
Power supply

LEDSB96W48V-NDM-U01

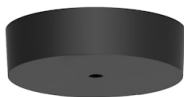
LED Driver, 48VDC, 96W, Non-
Dimming, 120-277V



REQUIRED
Accessory

08.8883.40A

Canopy surface White, Power
Supply not included order
separately



REQUIRED
Accessory

08.8883.14A

Canopy surface Black, Power
Supply not included order
separately