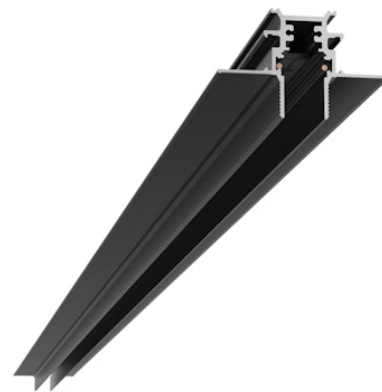


FLOS

06.5081.14 Black

The Tracking Magnet Recessed Profile Casambi / On Board Dimmer compatible

Designed by FLOS Architectural, 2018



Electromechanical profile for recessed installation in plasterboard ceilings and walls, available in lengths from 1m to 3m.

Are you a professional and your project needs consulting and support?

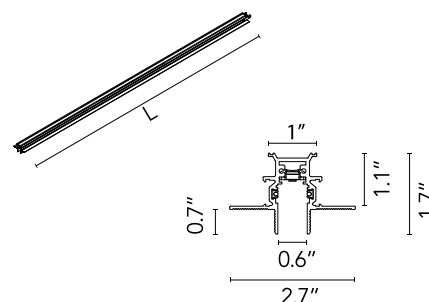
BOOK AN APPOINTMENT

Main specifications

Mounting	Wall recessed, Ceiling recessed
Environments	Indoor dry location
Light sources included	no

Physical

Color	Black
Trim	No
Field cuttable	Yes
Length (in)	59.05
Net weight (lb)	4.12
IP internal	20
IP external	20



Download

Family spec sheet	ZIP
Mounting instructions	PDF



Photometric

Extreme cut off No

Electrical

Forward voltage (V)	48
Driver	Remote
Dimmable	Yes
Dimming type	Dimmer on board
Emergency type	No

Notes

Version compatible with "On board dimmer" luminaries and version compatible with system controlled luminaries (DALI, 1-10V, FLOS SMART CONTROL) available. Corners, connectors and accessories common for the two profile versions. Feed connector, intermediated connector and end-caps to be ordered separately. Mechanical 90° corners available in the same plane (symmetrical element for left and right corners), symmetrical 90° inner and outer corners in different planes. Intermediate connectors to be ordered separately if electrical continuity on corners is required. Corners do not admit installation of spots. Fixed or adjustable fastening kits available (optional). The fastening kits for the roof permit installing without using aluminium fastening profiles. Recommended for installations where the Tracking Magnet can be installed before the suspended plasterboard ceiling.

Accessories & Power Supply



REQUIRED
Power supply

LEDSB60W48V-NDM-U01
LED Driver, 48VDC, 60W, Non-Dimming, 120-277V



REQUIRED
Power supply

LEDSB60W48V-NDM-D01
LED Driver, 48VDC, 60W, Non-Dimming, 120-277V



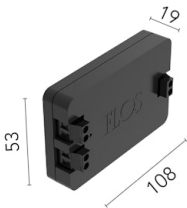
REQUIRED
Power supply

Electrical
LEDSB30W48V-NDM-D01
LED power supply source for remote installation, 48V/30W



REQUIRED
Power supply

LEDSB40W48V-NDM-U01
LED Driver, 48VDC, 40W, Non-Dimming, 120-277V



REQUIRED
Power supply

LEDSB96W48V-NDM-D01
LED Driver, 48VDC, 96W, Non-Dimming, 120-277V



REQUIRED
Accessory

Electrical
08.0611.14A
The Tracking Magnet Profile Feed Connector



REQUIRED
Accessory

Electrical
08.0612.14
The Tracking Magnet Profile Intermediate Connector Straight



REQUIRED
Accessory

Electrical

08.0614.14

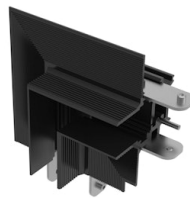
The Tracking Magnet Profile
Intermediate Connector
Flexible/Electrical Corner



REQUIRED
Power supply

LEDSB96W48V-NDM-U01

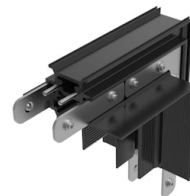
LED Driver, 48VDC, 96W, Non-
Dimming, 120-277V



OPTIONAL
Corner

06.5005.14

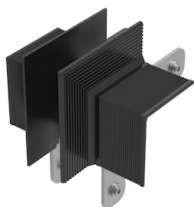
The Tracking Magnet Recessed
Profile 90° Mechanical Corner



OPTIONAL
Corner

06.5006.14

The Tracking Magnet Recessed
Profile Inner Mechanical Corner



OPTIONAL
Corner

06.5007.14

The Tracking Magnet Recessed
Profile Outer Mechanical Corner



OPTIONAL
Accessory

06.5008.14

The Tracking Magnet Recessed
Profile End Caps



OPTIONAL

Installation

08.8866.14

Fixed ceiling kit. 2 unit kit

FLOS

OPTIONAL
Bracket

08.8867.14UL

Track Ceiling Mounting clip 1/4"
Kit - 1 Units