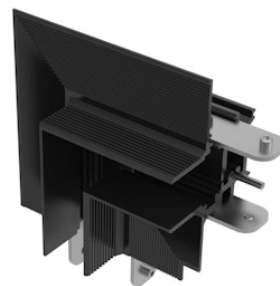


## The Tracking Magnet Recessed Profile 90° Mechanical Corner

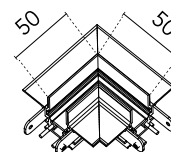
Designed by FLOS Architectural, 2018



Electromechanical profile for recessed installation in plasterboard ceilings and walls, available in lengths from 1m to 3m.

Are you a professional and your project needs consulting and support?

BOOK AN APPOINTMENT



### Main specifications

Mounting	Wall recessed, Ceiling recessed
Environments	Indoor dry location
Light sources included	no

### Physical

Colour	Black
Trim	No
Field cuttable	No
Recessed depth (mm)	45
Length (mm)	55
Net weight (kg)	0.15
IP internal	20
IP external	20

### Download

Mounting instructions

↓ PDF



### Electrical

Forward voltage (V)	48
Emergency	No

## Notes

90° mechanical corner. To create electrical continuity, order with the flexible intermediate connector.

---

Accessories & Power Supply



REQUIRED  
Accessory

06.5008.14

The Tracking Magnet Recessed  
Profile End Caps



REQUIRED  
Accessory

Electrical

08.0614.14

The Tracking Magnet Profile  
Intermediate Connector  
Flexible/Electrical Corner



REQUIRED  
Installation

08.8866.14

Fixed ceiling kit. 2 unit kit



REQUIRED  
Installation

08.8867.14

Adjustable ceiling kit. 2 unit kit