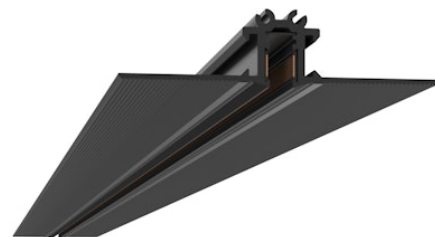


The Micro Running Magnet Recessed Profile NEW

Designed by FLOS Architectural, 2020

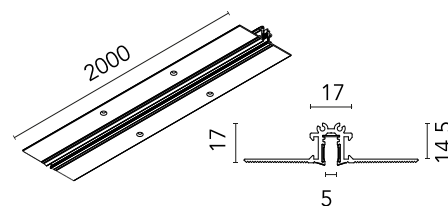


Length: 2000 - Wall recessed, Ceiling recessed

Electromechanical profile of reduced size for recessed installation in plasterboard ceilings/walls with lengths from 1 to 3 m.

Are you a professional and your project needs consulting and support?

[BOOK AN APPOINTMENT](#)



Main specifications

Mounting	Wall recessed, Ceiling recessed
Environments	Indoor dry location
Light sources included	No
Power (W)	120

Physical

Colour	Black
Length (mm)	2000
Net weight (kg)	0.97
IP internal	20

Download

[Mounting instructions](#)

[↓ PDF](#)



Electrical

Insulation class	III
Forward voltage (V)	24
Power supply	Remote excluded
Dimmable	Yes
Power supply type	Non Dimmable
Dimming interface	Remote Dimmable (Dimmer Not Included)

Accessories & Power Supply



REQUIRED
Power supply
Electrical

60.9516
Remote Power Supply Non
Dimmable 24V. 120W. 220/240V



REQUIRED
Power supply
Electrical

60.9443
Remote Power Supply Non
Dimmable 24V. 100W. 220/240V



REQUIRED
Power supply
Electrical

60.9515
Remote Power Supply Non
Dimmable 24V. 60W. 220/240V



REQUIRED
Power supply
Electrical

60.9374
Remote Power Supply Non
Dimmable 24V. 60W. 220/240V



REQUIRED
Power supply
Electrical

60.9777A
Remote Power Supply Non
Dimmable 24V. 120W. 220/240V



REQUIRED
06.6034.40
Recessed/Surface Feed Connector



REQUIRED
Installation
06.6036.40
Recessed/Surface End Caps. 1
unit kit



OPTIONAL
Accessory
Electrical
60.9394
Controller 0/1-10V or Push Dim.
Max 10A



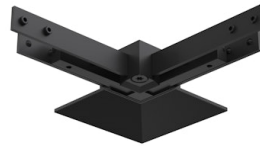
OPTIONAL
Accessory
Electrical

60.9938
Controller Casambi. Max 12A



OPTIONAL
Control interface
Electrical

60.9677A
LED module Dali/Push dimmable control unit for 12, 24 or 48Vdc



OPTIONAL
Corner
Installation

06.6030.14
90° Corner. Electrical/mechanical connection



OPTIONAL
Corner
Installation

06.6032.14
Inner corner. Electrical/mechanical connection



OPTIONAL
Installation

06.6035.14
Recessed/Surface Intermediate Connector