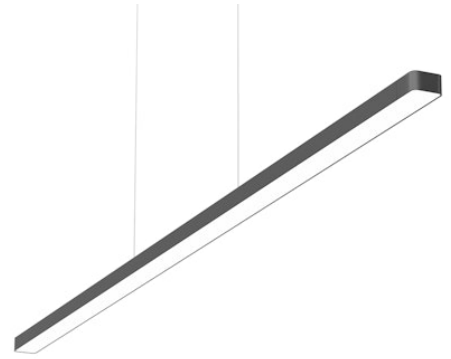


# FLOS

03.9501.14 Black

## Super Line Up&Down Direct

Designed by FLOS Architectural, 2017



LED luminaire for direct and indirect lighting with a signature minimalist and compact design, to be installed on ceilings by means of suspension. Power source included in installation kits must be ordered separately.

Are you a professional and your project needs consulting and support?

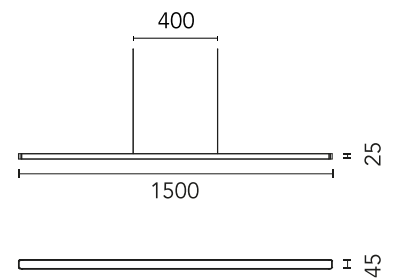
BOOK AN APPOINTMENT

### Main specifications

Mounting	Suspension
Environments	Indoor dry location
Light source type	LED
Light sources included	Yes
LED type	Top LED
Lamp category	LED
Number of lamps	1
Power (W)	58
System power (W)	60
Source flux (lm)	7351
Lumen Output (lm)	5472
Efficacy (lm/W)	91.2

### Physical

Colour	Black
Trim	No
Orientation	Fixed
Length (mm)	1500
Net weight (kg)	1.45
IP internal	20
IP external	20



### Download

Mounting instructions  PDF

### Photometric Files

LDT / IES  ZIP

### Technical Drawings

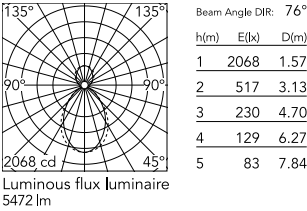
2D  ZIP

3D  ZIP

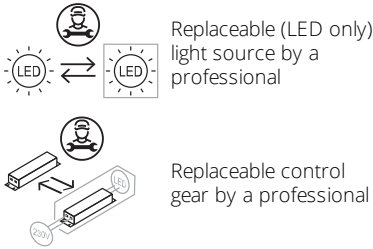
 Bim  ZIP



## Schematic light drawing



## Ecodesign and Energy Labelling



## Photometric

Lighting type	Indirect, Direct
Light distribution	Asymmetric
CCT (K)	4000
CRI>	90
McAdam steps (SDCM)	3
LED Life / Failure Ratio	L80B50 > 50.000h (Tc=85°C)
Beam angle C0-180 (°)	76
Beam angle C90-270 (°)	82

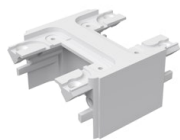
## Electrical

Insulation class	III
Forward voltage (V)	55.8
LED current (mA)	1050
Power supply	Remote
Dimmable	Yes
Power supply type	Dimmable 0-10V
Dimming interface	Remote Dimmable (Dimmer Not Included)
Emergency	No

## Notes

Cable 4.25 m

Accessories & Power Supply

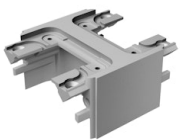


REQUIRED  
Accessory

Installation

08.9076.40

Interconnection Accessory

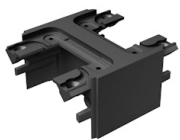


REQUIRED  
Accessory

Installation

08.9076.02

Interconnection Accessory

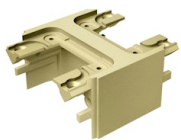


REQUIRED  
Accessory

Installation

08.9076.14

Interconnection Accessory

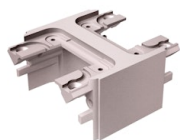


REQUIRED  
Accessory

Installation

08.9076.ET

Interconnection Accessory



REQUIRED  
Accessory

Installation

08.9076.EU

Interconnection Accessory



REQUIRED  
Power supply

Electrical

08.0524.02

Remote Power Supply Kit 60W.  
Non Dimmable



REQUIRED  
Power supply

Electrical

08.0524.14

Remote Power Supply Kit 60W.  
Non Dimmable



REQUIRED  
Power supply

Electrical

08.0524.40

Remote Power Supply Kit 60W.  
Non Dimmable



REQUIRED  
Power supply  
Electrical

08.0524.ET

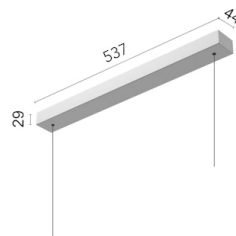
Remote Power Supply Kit 60W.  
Non Dimmable



REQUIRED  
Power supply  
Electrical

08.0524.EU

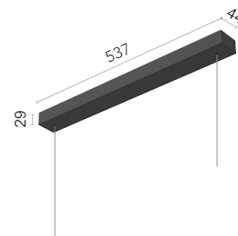
Remote Power Supply Kit 60W.  
Non Dimmable



REQUIRED  
Power supply  
Electrical

08.0520.02A

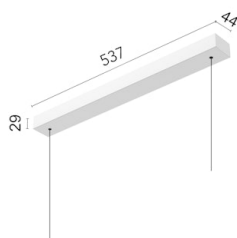
Surface Kit 60W. Non Dimmable



REQUIRED  
Power supply  
Electrical

08.0520.14A

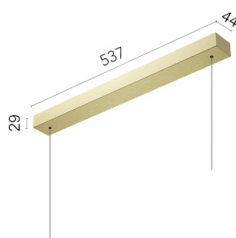
Surface Kit 60W. Non Dimmable



REQUIRED  
Power supply  
Electrical

08.0520.40A

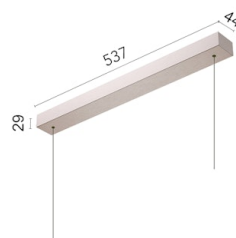
Surface Kit 60W. Non Dimmable



REQUIRED  
Power supply  
Electrical

08.0520.ETA

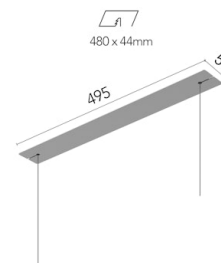
Surface Kit 60W. Non Dimmable



REQUIRED  
Power supply  
Electrical

08.0520.EUA

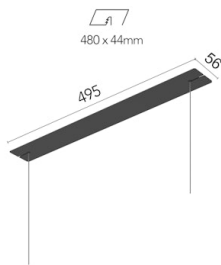
Surface Kit 60W. Non Dimmable



REQUIRED  
Power supply  
Electrical

08.0522.02A

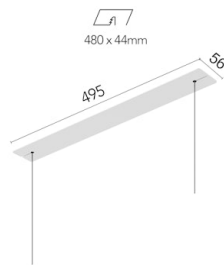
Recessed Kit 60W. Non Dimmable



REQUIRED  
Power supply  
Electrical

08.0522.14A

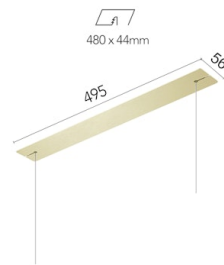
Recessed Kit 60W. Non Dimmable



REQUIRED  
Power supply  
Electrical

08.0522.40A

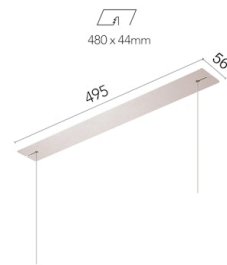
Recessed Kit 60W. Non Dimmable



REQUIRED  
Power supply  
Electrical

08.0522.ETA

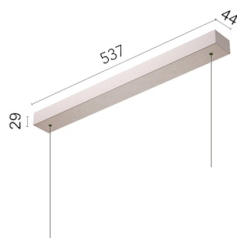
Recessed Kit 60W. Non Dimmable



REQUIRED  
Power supply  
Electrical

08.0522.EUA

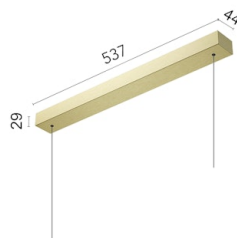
Recessed Kit 60W. Non Dimmable



REQUIRED  
Power supply  
Electrical

08.0521.EUA

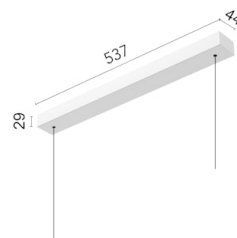
Surface Kit 60W. Dali Version



REQUIRED  
Power supply  
Electrical

08.0521.ETA

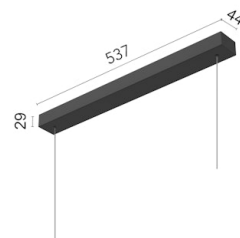
Surface Kit 60W. Dali Version



REQUIRED  
Power supply  
Electrical

08.0521.40A

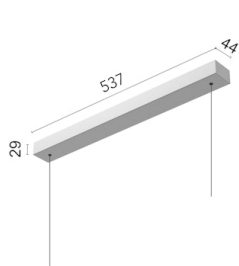
Surface Kit 60W. Dali Version



REQUIRED  
Power supply  
Electrical

08.0521.14A

Surface Kit 60W. Dali Version



REQUIRED  
Power supply  
Electrical

08.0521.02A

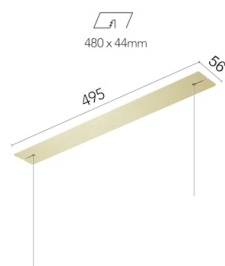
Surface Kit 60W. Dali Version



REQUIRED  
Power supply  
Electrical

08.0523.EUA

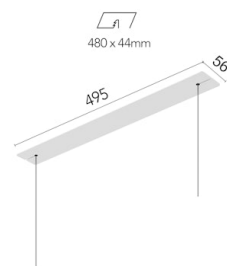
Recessed Kit 60W. Dali Version



REQUIRED  
Power supply  
Electrical

08.0523.ETA

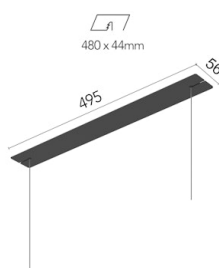
Recessed Kit 60W. Dali Version



REQUIRED  
Power supply  
Electrical

08.0523.40A

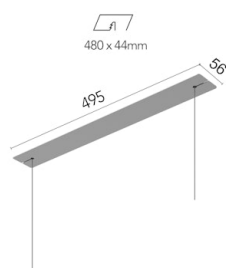
Recessed Kit 60W. Dali Version



REQUIRED  
Power supply  
Electrical

08.0523.14A

Recessed Kit 60W. Dali Version



REQUIRED  
Power supply  
Electrical

08.0523.02A

Recessed Kit 60W. Dali Version



REQUIRED  
Power supply  
Electrical

08.0525.02A

Remote Power Supply Kit 60W.  
Dali Version



REQUIRED  
Power supply  
Electrical

08.0525.14A

Remote Power Supply Kit 60W.  
Dali Version



REQUIRED  
Power supply

Electrical

08.0525.40A

Remote Power Supply Kit 60W.

Dali Version



REQUIRED  
Power supply

Electrical

08.0525.ETA

Remote Power Supply Kit 60W.

Dali Version



REQUIRED  
Power supply

Electrical

08.0525.EUA

Remote Power Supply Kit 60W.

Dali Version