

FLOS

03.9560.40 White

Super Line Pro Up&Down

NEW

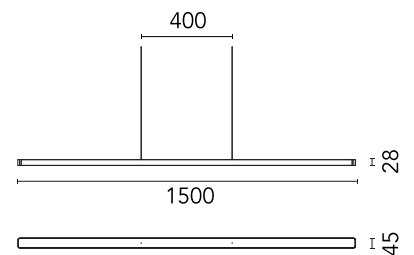
Designed by FLOS Architectural



LED luminaire for direct and indirect lighting with a signature minimalist and compact design, to be installed on ceilings by means of suspension. Power source included in installation kits must be ordered separately. Greater Up or Down intensity can be selected using power kits with a device with two independent outputs.

Are you a professional and your project needs consulting and support?

BOOK AN APPOINTMENT



Main specifications

Mounting	Suspension
Environments	Indoor dry location
Light source type	LED
Light sources included	Yes
LED type	Top LED
Lamp category	LED
Number of lamps	1
Power (W)	58
System power (W)	60
Lumen Output (lm)	6314
Efficacy (lm/W)	105.23

Physical

Colour	White
Trim	No
Orientation	Fixed
Length (mm)	1500
Net weight (kg)	1.45
IP internal	20
IP external	20

Download

Mounting instructions  PDF


Photometric Files

LDT / IES  ZIP

Technical Drawings

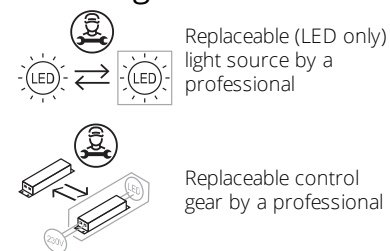
2D  ZIP

3D  ZIP

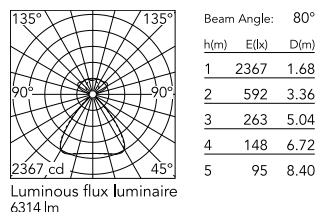
 Bim  ZIP



Ecodesign and Energy Labelling



Schematic light drawing



Photometric

Lighting type	Indirect, Direct
Light distribution	Symmetric
CCT (K)	3000
CRI>	90
McAdam steps (SDCM)	3
LED Life / Failure Ratio	L80B50 > 50.000h (Tc=85°C)
Beam angle C0-180 (°)	80
Beam angle C90-270 (°)	80
Beam angle indirect C0-180 (°)	110
Beam angle indirect C90-270 (°)	110
UGR _L	<19

Electrical

Insulation class	III
Forward voltage (V)	55.8
LED current (mA)	600
Power supply	Remote
Dimmable	Yes
Power supply type	Dimmable 0-10V
Dimming interface	Remote Dimmable (Dimmer Not Included)
Emergency	No

Notes

UGR<19 & cd/m2 @ 65°<3000 workplace optimised. Cable 4.25 m

Accessories & Power Supply

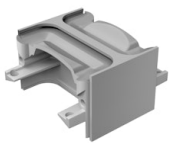


REQUIRED
Accessory

Installation

08.9077.40

Interconnection Accessory



REQUIRED
Accessory

Installation

08.9077.02

Interconnection Accessory

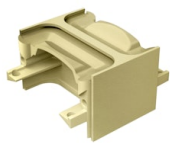


REQUIRED
Accessory

Installation

08.9077.14

Interconnection Accessory



REQUIRED
Accessory

Installation

08.9077.ET

Interconnection Accessory

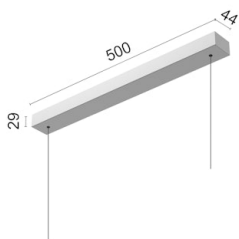


REQUIRED
Accessory

Installation

08.9077.EU

Interconnection Accessory

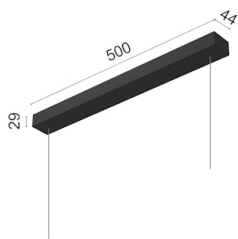


REQUIRED
Power supply

Electrical

08.0640.02

Surface Kit. Non Dimmable/Dali
Version

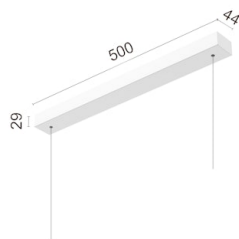


REQUIRED
Power supply

Electrical

08.0640.14

Surface Kit. Non Dimmable/Dali
Version

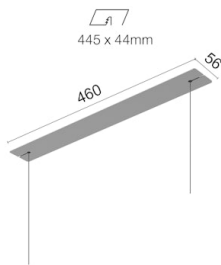


REQUIRED
Power supply

Electrical

08.0640.40

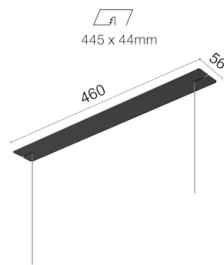
Surface Kit. Non Dimmable/Dali
Version



REQUIRED
Power supply
Electrical

08.0641.02

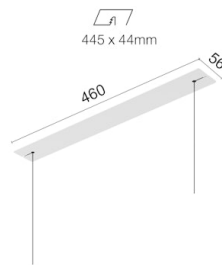
Remote Power Supply Kit. Non
Dimmable/Dali Version



REQUIRED
Power supply
Electrical

08.0641.14

Remote Power Supply Kit. Non
Dimmable/Dali Version



REQUIRED
Power supply
Electrical

08.0641.40

Remote Power Supply Kit. Non
Dimmable/Dali Version



REQUIRED
Power supply
Electrical

08.0642.02

Remote Power Supply Kit. Non
Dimmable/Dali Version



REQUIRED
Power supply
Electrical

08.0642.14

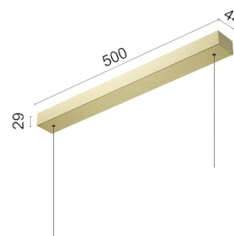
Remote Power Supply Kit. Non
Dimmable/Dali Version



REQUIRED
Power supply
Electrical

08.0642.40

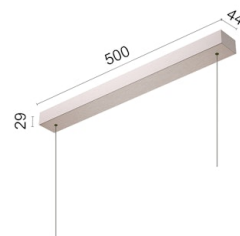
Remote Power Supply Kit. Non
Dimmable/Dali Version



REQUIRED
Power supply
Electrical

08.0640.ET

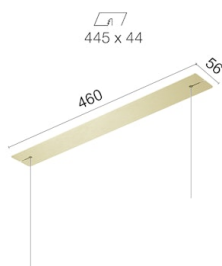
Surface Kit. Non Dimmable/Dali
Version



REQUIRED
Power supply
Electrical

08.0640.EU

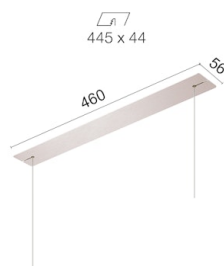
Surface Kit. Non Dimmable/Dali
Version



REQUIRED
Power supply
Electrical

08.0641.ET

Remote Power Supply Kit. Non
Dimmable/Dali Version



REQUIRED
Power supply
Electrical

08.0641.EU

Remote Power Supply Kit. Non
Dimmable/Dali Version



REQUIRED
Power supply
Electrical

08.0642.ET

Remote Power Supply Kit. Non
Dimmable/Dali Version



REQUIRED
Power supply
Electrical

08.0642.EU

Remote Power Supply Kit. Non
Dimmable/Dali Version