

FLOS

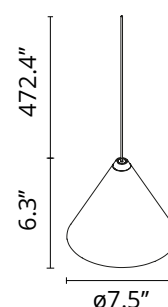
F6487009 White

String Light - Cone head - 12mt cable

Designed by Michael Anastassiades, 2014

21W - 1035lm - 2700K

A play of graceful light overhead, String Light by Michael Anastassiades adds a streamlined sophistication to your home or office. Providing diffused light, the suspension lamp features a varnished die-cast aluminum body coated with clear soft-touch varnish. The optical diffuser is opal PC (polycarbonate). Inspiration behind the design: "Every time I take the train, I sit by the window and watch the series of perfectly parallel strings connecting the pylons, as we move at high speed," explains designer Michael Anastassiades. "I love the way they divide the landscape and how spheres are occasionally beaded through the wires at random intervals. I also love how, in Mediterranean cultures, strings of lights are stretched between posts to mark an outdoor space for an evening party in a village square. And finally, I love how human ingenuity works around problems created by everyday things in the house (like switches and power points) that others have chosen to position where we don't want them." Details Suspension system options with Kevlar reinforced coaxial cable Length: 12 meters (40 ft) Length: 22 meters (72 ft) New Switching Capabilities - 2 versions Soft Touch version: The device can be dimmed by pressing on the cable above the diffuser. Casambi App Control version: The appliance can be dimmed by applying pressure to the cable in the vicinity and by Bluetooth using the FLOS CONTROL application powered by CASAMBI, available for download from the online stores. Installation Refer to the Installation Guide, under the Product Details tab on this page. Contact customer service team for more guidance. This fixture should be relaxed and then re-tightened approximately 24-hours after installation.



Download

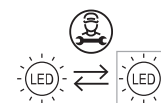
Mounting instructions [↓ PDF](#)
Mounting instructions [↓ PDF](#)
Mounting instructions [↓ PDF](#)

Photometric Files

LDT / IES [↓ LDT](#)

Ecodesign and Energy Labelling

This product contains a light source of energy efficiency class D



Replaceable (LED only) light source by a professional

Are you a professional and your project needs consulting and support?

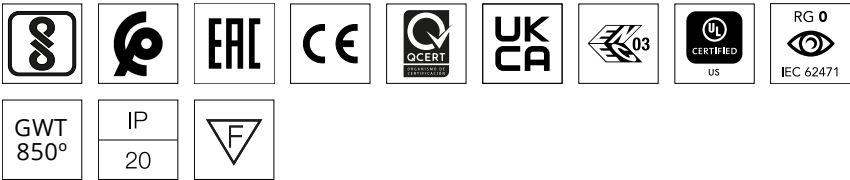
[BOOK AN APPOINTMENT](#)

Main specifications

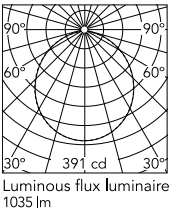
EAN	8059607041444
Mounting	Suspension
Environments	Indoor dry location
Light Source Type	LED
Light sources included	Yes
LED type	LED array
Power (W)	21
System flux (lm)	1035

Physical

Color	White
Length (in)	7.48
Cord color	White
Cord length (in)	472.441
Net weight (lb)	2.2
Package height (in)	11.81
Package width (in)	11.81
Package length (in)	11.81
Package volume (in)	1647.65
IP internal	20



Schematic light drawing



Photometric

Light distribution	Roto symmetric
CCT (K)	2700

Electrical

Insulation class	III
Main voltage (Vac)	48
Forward voltage (V)	48
Driver	Remote excluded
Dimmable	Yes
Dimming type	Electronic 48V
Dimming interface	Dimmer Integrated
Batteries inside	No

Accessories & Power Supply



REQUIRED

FU648409

String Light White Base



REQUIRED

F6482009

String Light Canopy in White

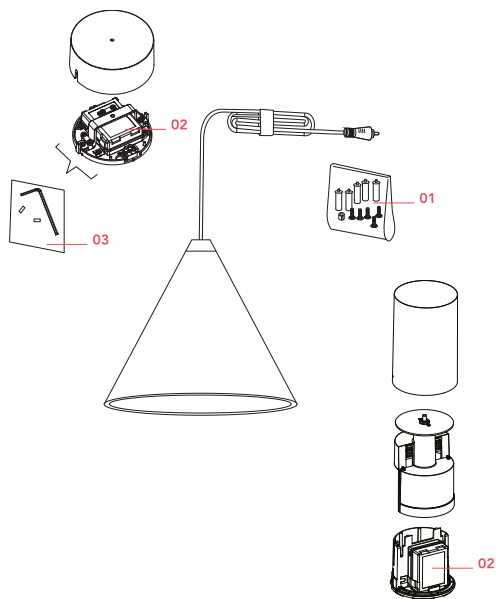


OPTIONAL

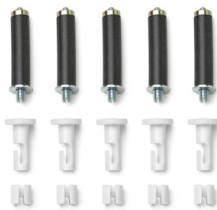
F6485009

String Light Cable

Spare Parts



- 01. String Light Kit with white hooks and white cable clamps RF6480109
- 02. Power supply unit for led RF22934
- 03. Kit with allen key and screws for ceiling rose assembly RFU648200



RF6480109

String Light Kit with white hooks
and white cable clamps



RF22934

Power supply unit for led



RFU648200

Kit with allen key and screws for
ceiling rose assembly