

FLOS

03.6302.14B9V Black

Spot Module 0-10V Dimming

Designed by FLOS Architectural, 2016

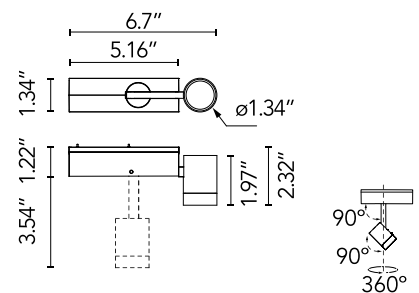


LED - Power LED - 8W - 418lm - 3000K - CRI> 90 - Beam° 14

Accent LED Spot modules can be rapidly exchanged and repositioned without tools. Light elements are quick to position and connect automatically with magnets. Built-in dimming knob dims fixture from 20-100%, DALI from 1-100% and 0-10V from 10-100%. Standard beam spread is 14°. Additional interchangeable lenses available in 23° and 33°, and 10° x 40° elliptical beam spread.

Are you a professional and your project needs consulting and support?

BOOK AN APPOINTMENT



Main specifications

Mounting	Track
Environments	Indoor dry location
Light Source Type	LED
Light sources included	Yes
LED type	Power LED
Lamp category	LED
Number of lamps	1
Power (W)	8
System power (W)	8.4
System flux (lm)	418

Physical

Color	Black
Orientation	Adjustable
Rotation (°)	360
Longitudinal tilting (°)	90
Length (in)	1.34
Net weight (lb)	0.41
IP internal	20

Download

Family spec sheet	ZIP
Mounting instructions	PDF

Photometric Files

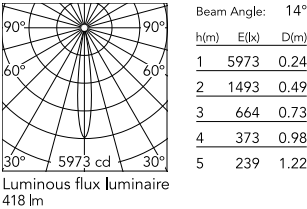
LDT / IES	ZIP
-----------	-----

Technical Drawings

2D	ZIP
3D	ZIP



Schematic light drawing



Photometric

Lighting type	Direct
Light distribution	Symmetric
CCT (K)	3000
CRI>	90
McAdam steps (SDCM)	3
LED Life / Failure Ratio	L80B50>50.000h (Tc=85°C)
Beam angle C0-180 (°)	14
Beam angle C90-270 (°)	14
Extreme cut off	No
UGR _L	<16

Electrical

Forward voltage (V)	24
Driver	Remote excluded
Dimmable	Yes
Dimming type	Dimmable 0-10V
Dimming range (%)	10-100

Accessories & Power Supply



OPTIONAL
Accessory
Optical

08.8427.14
Screening external ring for
Running Magnet spot module



OPTIONAL
Accessory
Optical

08.8759.00
Elliptical lens



OPTIONAL
Accessory
Optical

08.8760.00
Frosted Medium lens



OPTIONAL
Accessory
Optical

08.8761.00
Frosted Flood lens