

# FLOS

03.8154.40 White

## Spot 120 On Board Dimmer

Designed by FLOS Architectural, 2017



Accent lighting LED module.

Are you a professional and your project needs consulting and support?

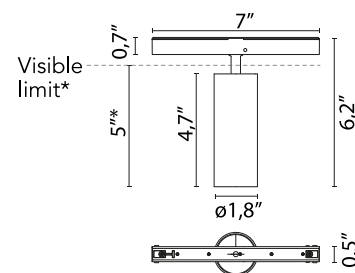
BOOK AN APPOINTMENT

### Main specifications

Mounting	Track
Environments	Indoor dry location
Light Source Type	LED
Light sources included	Yes
LED type	LED array
Lamp category	LED
Number of lamps	1
Power (W)	12.5
System power (W)	12.5
Source flux (lm)	921
System flux (lm)	654
Efficacy (lm/W)	52.32

### Physical

Color	White
Trim	No
Orientation	Adjustable
Rotation (°)	360
Longitudinal tilting (°)	90
Length (in)	7.01
IP internal	20
IP external	20



\*installed in The Tracking Magnet

### Download

Family spec sheet	ZIP
Family spec sheet	ZIP
Mounting instructions	PDF

### Photometric Files

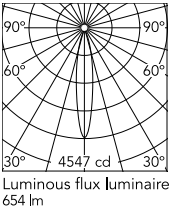
LDT / IES	ZIP
-----------	-----

### Technical Drawings

2D	ZIP
3D	ZIP



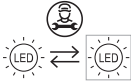
## Schematic light drawing



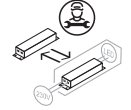
Beam Angle: 17°

h(m)	E(lx)	D(m)
1	4547	0.31
2	1137	0.61
3	505	0.92
4	284	1.23
5	182	1.53

## Ecodesign and Energy Labelling



Replaceable (LED only)  
light source by a  
professional



Replaceable control  
gear by a professional

## Photometric

Lighting type	Direct
Light distribution	Symmetric
CCT (K)	2700
CRI>	90
McAdam steps (SDCM)	2
LED Life / Failure Ratio	L80B50 > 50.000h (Tc=85°C)
Beam angle C0-180 (°)	17
Beam angle C90-270 (°)	17
UGR <sub>L</sub>	<10

## Electrical

Insulation class	III
Forward voltage (V)	48
LED current (mA)	350
Driver	Remote excluded
Dimmable	Yes
Dimming type	Dimmer on board
Dimming range (%)	10-100
Dimming interface	Dimmer Integrated
Emergency type	No

## Notes

Accessories included (honeycomb and screening crosspiece).