

FLOS

03.8154.14.DA Black

Spot 120 Dali Version

Designed by FLOS Architectural, 2017



Accent lighting LED module.

Are you a professional and your project needs consulting and support?

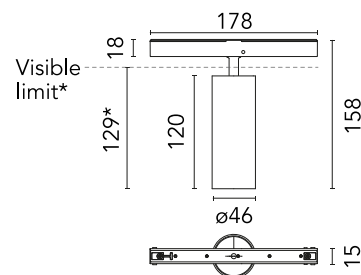
BOOK AN APPOINTMENT

Main specifications

Mounting	Track
Environments	Indoor dry location
Light source type	LED
Light sources included	Yes
LED type	LED array
Lamp category	LED
Number of lamps	1
Power (W)	12.5
System power (W)	12.5
Source flux (lm)	921
Lumen Output (lm)	654
Efficacy (lm/W)	52.32

Physical

Colour	Black
Trim	No
Orientation	Adjustable
Rotation (°)	360
Longitudinal tilting (°)	90
Spot diameter (mm)	46
Length (mm)	178
Net weight (kg)	0.29
IP internal	20
IP external	20



*installed in The Tracking Magnet

Download

Mounting instructions [Download PDF](#)

Photometric Files

LDT / IES [Download ZIP](#)

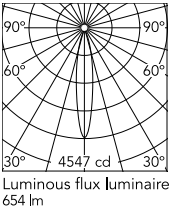
Technical Drawings

2D [Download ZIP](#)

3D [Download ZIP](#)

[Bim](#) [Download ZIP](#)

Schematic light drawing



Ecodesign and Energy Labelling

Replaceable (LED only) light source by a professional

Replaceable control gear by a professional

Photometric

Lighting type	Direct
Light distribution	Symmetric
CCT (K)	2700
CRI>	90
McAdam steps (SDCM)	2
LED Life / Failure Ratio	L80B50 > 50.000h (Tc=85°C)
Beam angle C0-180 (°)	17
Beam angle C90-270 (°)	17
UGR _L	<10

Electrical

Insulation class	III
Forward voltage (V)	48
LED current (mA)	350
Power supply	Remote excluded
Dimmable	Yes
Power supply type	Dimmable DALI 2
Dimming range (%)	10-100
Dimming interface	Remote Dimmable (Dimmer Not Included)
Emergency	No

Notes

Accessories included (honeycomb and screening crosspiece). Only compatible with DALI profile version.