

## Spine T 2 Ultra Elliptical 1 Dimmable 1-10V

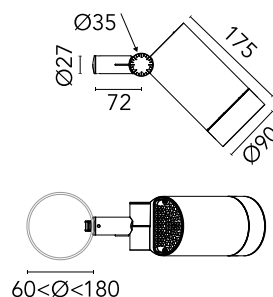
Designed by Vincent Van Duysen, 2021



Power LED source included. Equipped with an integrated snoot for higher visual comfort: the asymmetrical cut visor is available as an accessory. Collimators are available as an accessory to modify the beam opening. Integrated electric power supply 220-240 V ON/OFF and adjustable 1-10 V or DALI. Integrated support for pole fixing, for poles with a diameter between 60 and 120 mm and a maximum thickness of 3 mm. Equipped with a 5 m neoprene cable (10 m upon request) for remote connection. To guarantee its water tightness, it is recommended to use flexible cables designed for outdoor use.

Are you a professional and your project needs consulting and support?

[BOOK AN APPOINTMENT](#)



### Main specifications

EAN	8054793447193
Mounting	Pole Top
Environments	Outdoor wet location
Light source type	LED
Light sources included	Yes
LED type	Power LED
Number of lamps	1
System power (W)	10.5
Source flux (lm)	920
Lumen Output (lm)	717

### Physical

Colour	Deep Brown
Orientation	Adjustable
Rotation (°)	45
Longitudinal tilting (°)	165
Net weight (kg)	2.5
Package height (mm)	205
Package width (mm)	265
Package length (mm)	290
Package volume (m3)	0.02
IP internal	66

### Download

Mounting instructions [↓ ZIP](#)

### Photometric Files

LDT / IES [↓ ZIP](#)

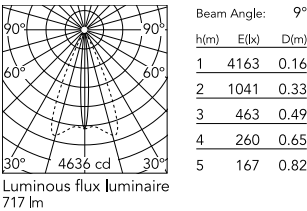
### Technical Drawings

2D [↓ ZIP](#)

3D [↓ ZIP](#)



Schematic light drawing



Photometric

Light distribution	Asymmetric
CCT (K)	2700
CRI>	80

Electrical

Insulation class	I
Frequency (Hz)	50/60
Main voltage (Vac)	220-240
Power supply	Integrated
Dimmable	Yes
Power supply type	Dimmable 1-10V
Dimming interface	Dimmer Integrated
Emergency	No

Ecodesign and Energy Labelling

This product contains a light source of energy efficiency class E

Replaceable (LED only) light source by a professional

Replaceable control gear by a professional

Notes

5 m neoprene cable (10 m upon request) for remote connection.

Accessories & Power Supply



REQUIRED Pole

FA24806  
Pole Ø76 mm h 3500 mm(with Base)



REQUIRED Pole

FA24833  
Pole Ø76 mm h 3500 mm(with Base)



REQUIRED Pole

FA25006  
Pole Ø76 mm h 3500 mm (+500 mm In-ground)



REQUIRED Pole

FA25033  
Pole Ø76 mm h 3500 mm (+500 mm In-ground)



REQUIRED Pole

FA24906  
Pole Ø76 mm h 4500 mm(with Base)



REQUIRED Pole

FA24933  
Pole Ø76 mm h 4500 mm(with Base)



REQUIRED Pole

FA414006  
Pole Ø 102 mm h 4000 mm With Base



REQUIRED Pole

FA414033  
Pole Ø 102 mm h 4000 mm With Base



REQUIRED Pole

FA414506  
Pole Ø 102 mm h 4000 mm  
(+500 mm In-ground)



REQUIRED Pole

FA414533  
Pole Ø 102 mm h 4000 mm  
(+500 mm In-ground)



REQUIRED Pole

FA415006  
Pole Ø 102 mm h 5000 mm With  
Base



REQUIRED Pole

FA415033  
Pole Ø 102 mm h 5000 mm With  
Base



REQUIRED Pole

FA415506  
Pole Ø 102 mm h 5000 mm  
(+500 mm In-ground)



REQUIRED Pole

FA415533  
Pole Ø 102 mm h 5000 mm  
(+500 mm In-ground)



REQUIRED Pole

FA25106  
Pole Ø76 mm h 4500 mm (+500  
mm In-ground)



REQUIRED Pole

FA25133  
Pole Ø76 mm h 4500 mm (+500  
mm In-ground)



OPTIONAL  
Accessory

F990C030000

4 way junction box 5 poles IP68  
(6-14 mm cables)



OPTIONAL  
Accessory

F990C080000

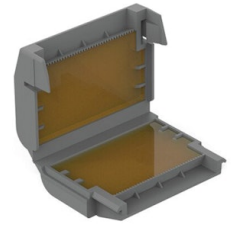
Connector kit 5-pole flying socket  
+ EU plug IP68.



OPTIONAL  
Accessory

FA116

Base Plate and Fixing Bolts for  
Pole Ø 102 mm h 4000/5000  
mm with Base



OPTIONAL  
Accessory

F990C110000

Gelbox IPX8 for splicing  
connectors



OPTIONAL  
Accessory

F026Z050018

Visor



OPTIONAL  
Accessory

F026Z060000

Honeycomb Louvre



OPTIONAL  
Accessory

F990G300000

Base plate with Bolts for Pole Ø  
76 mm h 3000/4000 mm with  
Base



OPTIONAL  
Accessory

F029Z020000

Converter Spine 2 Optic Medium  
Flood



OPTIONAL  
Accessory

F029Z021000

Converter Spine 2 Optic Flood



OPTIONAL  
Accessory

F029Z022000

Converter Spine 2 Optic Wide  
Flood



OPTIONAL  
Accessory

F029Z023000

Converter Spine 2 Optic Elliptic 1



OPTIONAL  
Accessory

F029Z024000

Converter Spine 2 Optic Elliptic 2



OPTIONAL  
Accessory

F029Z025000

Converter Spine 2 Optic Wall