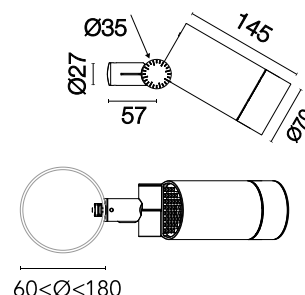


Spine T 1 Ultra

Designed by Vincent Van Duysen, 2021



Power LED source included. Equipped with an integrated snoot for higher visual comfort: the asymmetrical cut visor is available as an accessory. Collimators are available as an accessory to modify the beam opening. Integrated electric power supply 220-240 V ON/OFF. Integrated support for pole fixing, for poles with a diameter between 60 and 120 mm and a maximum thickness of 3 mm. Equipped with a 5 m neoprene cable (10 m upon request) for remote connection. To guarantee its water tightness, it is recommended to use flexible cables designed for outdoor use. Upon request: 1-10 V or DALI dimmable version with 24 Vdc remote power supply.



Are you a professional and your project needs consulting and support?

[BOOK AN APPOINTMENT](#)

Main specifications

EAN	8054793411484
Mounting	Pole Top
Environments	Outdoor wet location
Light source type	LED
Light sources included	Yes
LED type	Power LED
Number of lamps	1
System power (W)	7.9
Source flux (lm)	671
Lumen Output (lm)	499

Physical

Colour	White
Orientation	Adjustable
Rotation (°)	45
Longitudinal tilting (°)	165
Cord length (mm)	5000
Net weight (kg)	0.9
Package height (mm)	265
Package width (mm)	290
Package length (mm)	205
Package volume (m3)	0.02
IP internal	66

Download

[Mounting instructions](#)  ZIP

Photometric Files

[LDT / IES](#)  ZIP

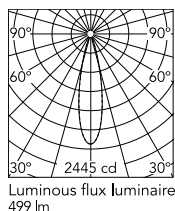
Technical Drawings

[2D](#)  ZIP

[3D](#)  ZIP



Schematic light drawing



Beam Angle: 24°

h(m)	E(lx)	D(m)
1	2445	0.42
2	611	0.84
3	272	1.27
4	153	1.69
5	98	2.11

Luminous flux luminaire
499 lm

Photometric

Light distribution	Symmetric
CCT (K)	2700
CRI>	80
Beam angle C0-180 (°)	25
Beam angle C90-270 (°)	25

Electrical

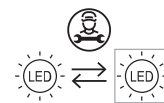
Insulation class	I
Frequency (Hz)	50/60
Main voltage (Vac)	220-240
Power supply	Integrated
Dimmable	No
Power supply type	Non Dimmable
Dimming interface	Not Dimmable
Emergency	No

Notes

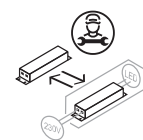
5 m neoprene cable (10 m upon request) for remote connection.

Ecodesign and Energy Labelling

This product contains a light source of energy efficiency class E



Replaceable (LED only) light source by a professional



Replaceable control gear by a professional

Accessories & Power Supply



REQUIRED Pole

FA24806
Pole Ø76 mm h 3500 mm(with Base)



REQUIRED Pole

FA24833
Pole Ø76 mm h 3500 mm(with Base)



REQUIRED Pole

FA25006
Pole Ø76 mm h 3500 mm (+500 mm In-ground)



REQUIRED Pole

FA25033
Pole Ø76 mm h 3500 mm (+500 mm In-ground)



REQUIRED Pole

FA24906
Pole Ø76 mm h 4500 mm(with Base)



REQUIRED Pole

FA24933
Pole Ø76 mm h 4500 mm(with Base)



REQUIRED Pole

FA414006
Pole Ø 102 mm h 4000 mm With Base



REQUIRED Pole

FA414033
Pole Ø 102 mm h 4000 mm With Base



REQUIRED Pole

FA414506
Pole Ø 102 mm h 4000 mm
(+500 mm In-ground)



REQUIRED Pole

FA414533
Pole Ø 102 mm h 4000 mm
(+500 mm In-ground)



REQUIRED Pole

FA415006
Pole Ø 102 mm h 5000 mm With
Base



REQUIRED Pole

FA415033
Pole Ø 102 mm h 5000 mm With
Base



REQUIRED Pole

FA415506
Pole Ø 102 mm h 5000 mm
(+500 mm In-ground)



REQUIRED Pole

FA415533
Pole Ø 102 mm h 5000 mm
(+500 mm In-ground)



REQUIRED Pole

FA25106
Pole Ø76 mm h 4500 mm (+500
mm In-ground)



REQUIRED Pole

FA25133
Pole Ø76 mm h 4500 mm (+500
mm In-ground)



OPTIONAL
Accessory

F990C00A000

2 way terminal block 4 poles IP68
H20 stop. (ø5,5÷12mm cable)



OPTIONAL
Accessory

FA116

Base Plate and Fixing Bolts for
Pole Ø 102 mm h 4000/5000
mm with Base



OPTIONAL
Accessory

F029Z010000

Converter Spine 1 Optic Medium
Flood



OPTIONAL
Accessory

F029Z011000

Converter Spine 1 Optic Flood



OPTIONAL
Accessory

F029Z012000

Converter Spine 1 Optic Wide
Flood



OPTIONAL
Accessory

F029Z013000

Converter Spine 1 Optic Elliptic 1



OPTIONAL
Accessory

F029Z014000

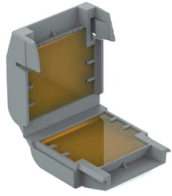
Converter Spine 1 Optic Elliptic 2



OPTIONAL
Accessory

F029Z015000

Converter Spine 1 Optic Wall
Washer



OPTIONAL
Accessory

F990C100000

Gelbox IPX8 for splicing
connectors



OPTIONAL
Accessory

F025Z060000

Honeycomb Louvre



OPTIONAL
Accessory

F990G300000

Base plate with Bolts for Pole Ø
76 mm h 3000/4000 mm with
Base



OPTIONAL
Accessory

F025Z050001

Visor



OPTIONAL
Accessory

F990C010000

3/4 way terminal block 4 poles
IP68 H2O stop. (ø5,5÷12mm
cable)