

F02502BA001 White

## Spine T 1 Absolute

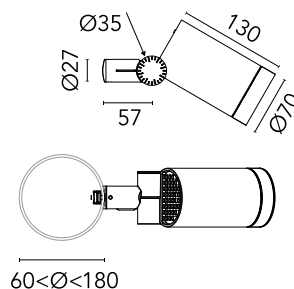
Designed by Vincent Van Duysen, 2021



LED COB light source integrated. Integrated electric power supply 220-240 V ON/OFF. Integrated support for pole fixing, for poles with a diameter between 60 and 120 mm and a maximum thickness of 3 mm. Equipped with a 5 m neoprene cable (10 m upon request) for remote connection. To guarantee its water tightness, it is recommended to use flexible cables designed for outdoor use. Upon request: 1-10 V or DALI dimmable version with 24 Vdc remote power supply.

Are you a professional and your project needs consulting and support?

BOOK AN APPOINTMENT



### Main specifications

EAN	8054793410623
Mounting	Pole Top
Environments	Outdoor wet location
Light source type	LED
Light sources included	Yes
LED type	LED array
Number of lamps	1
System power (W)	11
Source flux (lm)	1247
Lumen Output (lm)	923

### Physical

Colour	White
Orientation	Adjustable
Rotation (°)	45
Longitudinal tilting (°)	165
Cord length (mm)	5000
Net weight (kg)	0.9
Package height (mm)	265
Package width (mm)	290
Package length (mm)	205
Package volume (m3)	0.02
IP internal	66

### Download

Mounting instructions [ZIP](#)

### Photometric Files

LDT / IES [ZIP](#)

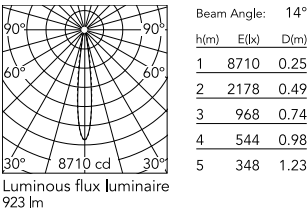
### Technical Drawings

2D [ZIP](#)

3D [ZIP](#)



Schematic light drawing



Photometric

Light distribution	Symmetric
CCT (K)	2700
CRI>	80
Beam angle C0-180 (°)	15
Beam angle C90-270 (°)	15

Electrical

Insulation class	I
Frequency (Hz)	50/60
Main voltage (Vac)	220-240
Power supply	Integrated
Dimmable	No
Power supply type	Non Dimmable
Dimming interface	Not Dimmable
Emergency	No

Ecodesign and Energy Labelling

This product contains a light source of energy efficiency class E

Replaceable (LED only) light source by a professional

Replaceable control gear by a professional

Notes

5 m neoprene cable (10 m upon request) for remote connection.

Accessories & Power Supply



REQUIRED Pole

FA24806  
Pole Ø76 mm h 3500 mm(with Base)



REQUIRED Pole

FA24833  
Pole Ø76 mm h 3500 mm(with Base)



REQUIRED Pole

FA25006  
Pole Ø76 mm h 3500 mm (+500 mm In-ground)



REQUIRED Pole

FA25033  
Pole Ø76 mm h 3500 mm (+500 mm In-ground)



REQUIRED Pole

FA24906  
Pole Ø76 mm h 4500 mm(with Base)



REQUIRED Pole

FA24933  
Pole Ø76 mm h 4500 mm(with Base)



REQUIRED Pole

FA414006  
Pole Ø 102 mm h 4000 mm With Base



REQUIRED Pole

FA414033  
Pole Ø 102 mm h 4000 mm With Base



REQUIRED  
Pole

FA414506

Pole Ø 102 mm h 4000 mm  
(+500 mm In-ground)



REQUIRED  
Pole

FA414533

Pole Ø 102 mm h 4000 mm  
(+500 mm In-ground)



REQUIRED  
Pole

FA415006

Pole Ø 102 mm h 5000 mm With  
Base



REQUIRED  
Pole

FA415033

Pole Ø 102 mm h 5000 mm With  
Base



REQUIRED  
Pole

FA415506

Pole Ø 102 mm h 5000 mm  
(+500 mm In-ground)



REQUIRED  
Pole

FA415533

Pole Ø 102 mm h 5000 mm  
(+500 mm In-ground)



REQUIRED  
Pole

FA25106

Pole Ø76 mm h 4500 mm (+500  
mm In-ground)



REQUIRED  
Pole

FA25133

Pole Ø76 mm h 4500 mm (+500  
mm In-ground)



OPTIONAL  
Accessory

F990C00A000

2 way terminal block 4 poles IP68  
H2O stop. (ø5,5÷12mm cable)



OPTIONAL  
Accessory

F990C010000

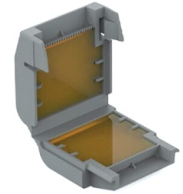
3/4 way terminal block 4 poles  
IP68 H2O stop. (ø5,5÷12mm  
cable)



OPTIONAL  
Accessory

FA116

Base Plate and Fixing Bolts for  
Pole Ø 102 mm h 4000/5000  
mm with Base



OPTIONAL  
Accessory

F990C100000

Gelbox IPX8 for splicing  
connectors



OPTIONAL  
Accessory

F025Z060000

Honeycomb Louvre



OPTIONAL  
Accessory

F990G300000

Base plate with Bolts for Pole Ø  
76 mm h 3000/4000 mm with  
Base