

FLOS

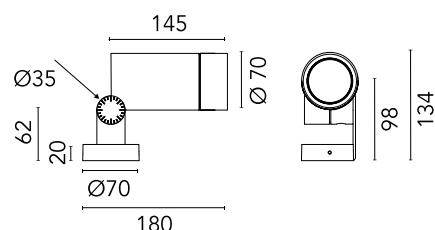
 F025R3DA030 Black

Spine L 1 Ultra

Designed by Vincent Van Duysen, 2021



Power LED source included. Equipped with an integrated snoot for higher visual comfort: the asymmetrical cut visor is available as an accessory. Collimators are available as an accessory to modify the beam opening. Integrated electric power supply 220-240 V ON/OFF. Minimum L-shaped mounting support integrated. Equipped with a 5 m neoprene cable (10 m upon request) for remote connection. To guarantee its water tightness, it is recommended to use flexible cables designed for outdoor use. Upon request: 1-10 V or DALI dimmable version with 24 Vdc remote power supply.



Are you a professional and your project needs consulting and support?

[BOOK AN APPOINTMENT](#)

Main specifications

| | |
|------------------------|-----------------------|
| EAN | 8054793438184 |
| Mounting | Ceiling, Wall, Ground |
| Environments | Outdoor wet location |
| Light source type | LED |
| Light sources included | Yes |
| LED type | Power LED |
| Number of lamps | 1 |
| System power (W) | 7.9 |
| Source flux (lm) | 696 |
| Lumen Output (lm) | 500 |

Physical

| | |
|--------------------------|------------|
| Colour | Black |
| Orientation | Adjustable |
| Longitudinal tilting (°) | 155 |
| Cord length (mm) | 5000 |
| Net weight (kg) | 0.9 |
| Package height (mm) | 190 |
| Package width (mm) | 245 |
| Package length (mm) | 280 |
| Package volume (m3) | 0.01 |
| IP internal | 66 |

Download

[Mounting instructions](#)  ZIP

Photometric Files

[LDT / IES](#)  ZIP

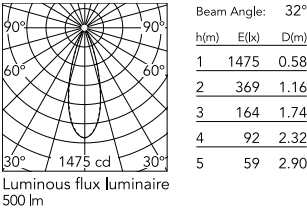
Technical Drawings

[2D](#)  ZIP

[3D](#)  ZIP



Schematic light drawing



Photometric

| | |
|------------------------|-----------|
| Light distribution | Symmetric |
| CCT (K) | 3000 |
| CRI> | 80 |
| Beam angle C0-180 (°) | 32 |
| Beam angle C90-270 (°) | 32 |

Electrical

| | |
|--------------------|--------------|
| Insulation class | I |
| Frequency (Hz) | 50/60 |
| Main voltage (Vac) | 220-240 |
| Power supply | Integrated |
| Dimmable | No |
| Power supply type | Non Dimmable |
| Dimming interface | Not Dimmable |
| Emergency | No |

Ecodesign and Energy Labelling

This product contains a light source of energy efficiency class E

Replaceable (LED only) light source by a professional

Replaceable control gear by a professional

Notes

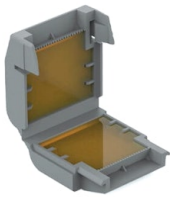
5 m neoprene cable (10 m upon request) for remote connection.

Accessories & Power Supply



OPTIONAL
Accessory

F990C00A000
2 way terminal block 4 poles IP68
H2O stop. (ø5,5÷12mm cable)



OPTIONAL
Accessory

F990C100000
Gelbox IPX8 for splicing
connectors



OPTIONAL
Accessory

F025Z060000
Honeycomb Louvre



OPTIONAL
Accessory

F025Z050030
Visor



OPTIONAL
Accessory

F990C010000
3/4 way terminal block 4 poles
IP68 H2O stop. (ø5,5÷12mm
cable)



OPTIONAL
Accessory

F029Z010000
Converter Spine 1 Optic Medium
Flood



OPTIONAL
Accessory

F029Z011000
Converter Spine 1 Optic Flood



OPTIONAL
Accessory

F029Z012000
Converter Spine 1 Optic Wide
Flood



OPTIONAL
Accessory

F029Z013000

Converter Spine 1 Optic Elliptic 1



OPTIONAL
Accessory

F029Z014000

Converter Spine 1 Optic Elliptic 2



OPTIONAL
Accessory

F029Z015000

Converter Spine 1 Optic Wall
Washer