

# FLOS

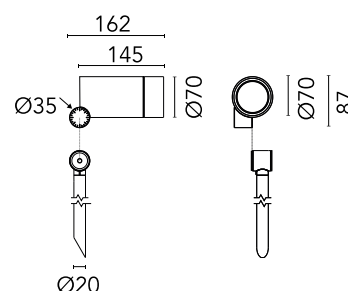
F025G3GA012 Forest Green

## Spine F 1 Ultra Elliptical 2

Designed by Vincent Van Duysen, 2021



Power LED source included. Equipped with an integrated snoot for higher visual comfort: the asymmetrical cut visor is available as an accessory. Collimators are available as an accessory to modify the beam opening. Integrated electric power supply 220-240 V ON/OFF. Equipped with a 5 m neoprene cable (10 m upon request) for remote connection. To guarantee its water tightness, it is recommended to use flexible cables designed for outdoor use. The rod for ground installations is available in two sizes and needs to be ordered separately. Upon request: 1-10 V or DALI dimmable version with 24 Vdc remote power supply.



Are you a professional and your project needs consulting and support?

BOOK AN APPOINTMENT

### Main specifications

EAN	8054793430638
Mounting	Ground
Environments	Outdoor wet location
Light source type	LED
Light sources included	Yes
LED type	Power LED
Number of lamps	1
System power (W)	7.9
Source flux (lm)	696
Lumen Output (lm)	505

### Physical

Colour	Forest Green
Orientation	Adjustable
Rotation (°)	360
Longitudinal tilting (°)	270
Net weight (kg)	0.9
Package height (mm)	190
Package width (mm)	245
Package length (mm)	280
Package volume (m3)	0.01
IP internal	66

### Download

Mounting instructions [ZIP](#)

### Photometric Files

LDT / IES [ZIP](#)

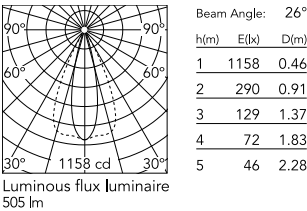
### Technical Drawings

2D [ZIP](#)

3D [ZIP](#)



Schematic light drawing



Photometric

Light distribution	Asymmetric
CCT (K)	3000
CRI>	80

Electrical

Insulation class	I
Frequency (Hz)	50/60
Main voltage (Vac)	220-240
Power supply	Integrated
Dimmable	No
Power supply type	Non Dimmable
Dimming interface	Not Dimmable
Emergency	No

Ecodesign and Energy Labelling

This product contains a light source of energy efficiency class E

Replaceable (LED only) light source by a professional

Replaceable control gear by a professional

Notes

5 m neoprene cable (10 m upon request) for remote connection.

Accessories & Power Supply



REQUIRED  
Accessory

F026Z020012

Rod Ø20 mm h 200 mm



REQUIRED  
Accessory

F026Z030012

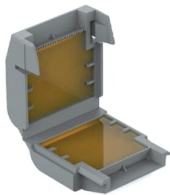
Rod Ø20 mm h 500 mm



OPTIONAL  
Accessory

F990C00A000

2 way terminal block 4 poles IP68  
H2O stop. (ø5,5÷12mm cable)



OPTIONAL  
Accessory

F990C100000

Gelbox IPX8 for splicing  
connectors



OPTIONAL  
Accessory

F025Z060000

Honeycomb Louvre



OPTIONAL  
Accessory

F025Z050012

Visor



OPTIONAL  
Accessory

F990C010000

3/4 way terminal block 4 poles  
IP68 H2O stop. (ø5,5÷12mm  
cable)



OPTIONAL  
Accessory

F029Z010000

Converter Spine 1 Optic Medium  
Flood



OPTIONAL  
Accessory

F029Z011000

Converter Spine 1 Optic Flood



OPTIONAL  
Accessory

F029Z012000

Converter Spine 1 Optic Wide  
Flood



OPTIONAL  
Accessory

F029Z013000

Converter Spine 1 Optic Elliptic 1



OPTIONAL  
Accessory

F029Z014000

Converter Spine 1 Optic Elliptic 2



OPTIONAL  
Accessory

F029Z015000

Converter Spine 1 Optic Wall  
Washer