


# FLOS

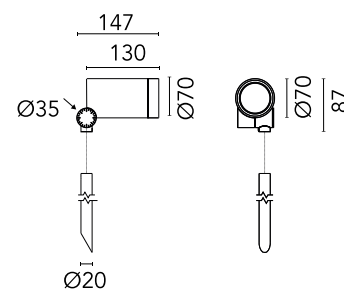
 F025L4FA018 Deep Brown

## Spine F 1 Pro Elliptical 1

Designed by Vincent Van Duysen, 2021



Power LED source included. Equipped with an integrated snoot for higher visual comfort: the asymmetrical cut visor is available as an accessory. Collimators are available as an accessory to modify the beam opening. Integrated electric power supply 220-240 V ON/OFF. Equipped with a 5 m neoprene cable (10 m upon request) for remote connection. To guarantee its water tightness, it is recommended to use flexible cables designed for outdoor use. The rod for ground installations is available in two sizes and needs to be ordered separately. Upon request: 1-10 V or DALI dimmable version with 24 Vdc remote power supply.



Are you a professional and your project needs consulting and support?

[BOOK AN APPOINTMENT](#)

### Main specifications

EAN	8054793435398
Mounting	Ground
Environments	Outdoor wet location
Light source type	LED
Light sources included	Yes
LED type	Power LED
Number of lamps	1
System power (W)	7.9
Source flux (lm)	720
Lumen Output (lm)	537

### Physical

Colour	Deep Brown
Orientation	Adjustable
Rotation (°)	360
Longitudinal tilting (°)	270
Net weight (kg)	0.9
Package height (mm)	190
Package width (mm)	245
Package length (mm)	280
Package volume (m3)	0.01
IP internal	66

### Download

Mounting instructions [ZIP](#)

### Photometric Files

LDT / IES [ZIP](#)

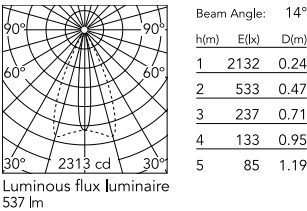
### Technical Drawings

2D [ZIP](#)

3D [ZIP](#)



Schematic light drawing



Photometric

Light distribution	Asymmetric
CCT (K)	4000
CRI>	80

Electrical

Insulation class	I
Frequency (Hz)	50/60
Main voltage (Vac)	220-240
Power supply	Integrated
Dimmable	No
Power supply type	Non Dimmable
Dimming interface	Not Dimmable
Emergency	No

Ecodesign and Energy Labelling

This product contains a light source of energy efficiency class E

Replaceable (LED only) light source by a professional

Replaceable control gear by a professional

Notes

5 m neoprene cable (10 m upon request) for remote connection.

Accessories & Power Supply



REQUIRED  
Accessory

F026Z020018

Rod Ø20 mm h 200 mm



REQUIRED  
Accessory

F026Z030018

Rod Ø20 mm h 500 mm



OPTIONAL  
Accessory

F990C030000

4 way junction box 5 poles IP68  
(6-14 mm cables)



OPTIONAL  
Accessory

F990C080000

Connector kit 5-pole flying socket  
+ EU plug IP68.



OPTIONAL  
Accessory

FA116

Base Plate and Fixing Bolts for  
Pole Ø 102 mm h 4000/5000  
mm with Base



OPTIONAL  
Accessory

F029Z020000

Converter Spine 2 Optic Medium  
Flood



OPTIONAL  
Accessory

F029Z021000

Converter Spine 2 Optic Flood



OPTIONAL  
Accessory

F029Z022000

Converter Spine 2 Optic Wide  
Flood



OPTIONAL  
Accessory

F029Z023000

Converter Spine 2 Optic Elliptic 1



OPTIONAL  
Accessory

F029Z024000

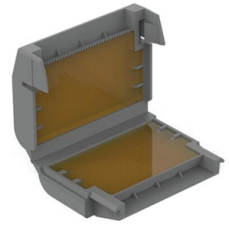
Converter Spine 2 Optic Elliptic 2



OPTIONAL  
Accessory

F029Z025000

Converter Spine 2 Optic Wall



OPTIONAL  
Accessory

F990C110000

Gelbox IPX8 for splicing  
connectors



OPTIONAL  
Accessory

F026Z060000

Honeycomb Louvre



OPTIONAL  
Accessory

F990G300000

Base plate with Bolts for Pole Ø  
76 mm h 3000/4000 mm with  
Base