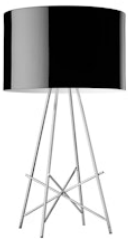


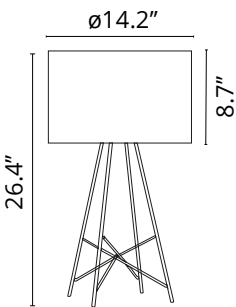
## Ray Table

Designed by Rodolfo Dordoni, 2007

Halogen - 100W



Designed by Rodolfo Dordoni in 2006, the Ray T floor lamp updates a classic shape to give it a decidedly contemporary edge. The steel tube structure of this modern design is welded, brushed, and chrome-plated, and its diffuser support disk is die-cast, polished, and chrome-plated with Zamak alloy. Its lathe-shaped aluminum diffusers, painted white on the inside, are shiny white or black on the outside. Or, choose a grey colored, blown and overlaid glass diffuser with a glossy external finish. The lamp has a resistive dimmer wired on the cord, offering a 0-100% lighting adjustment. The power cord is a black PVC/PVC (flat) sheath.



Are you a professional and your project needs consulting and support?

[BOOK AN APPOINTMENT](#)

### Main specifications

Mounting	Table
Environments	Indoor dry location
Light Source Type	Bulb
Light sources included	No
Lamp category	Halogen
Lamp type	T
Lamp holders	E26
Number of lamps	1
Power (W)	100

### Physical

Color	Black
Length (in)	14.17
Cord color	Black
Cord length (in)	72.835
Net weight (lb)	9.26
Package volume (in)	6392.87
IP internal	20

### Download

[Mounting instructions](#)



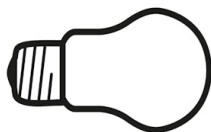
Photometric

Lighting type	Indirect, Direct
Light distribution	Symmetric
Extreme cut off	No

Electrical

Insulation class	II
Frequency (Hz)	60
Main voltage (Vac)	120
Dimmable	Yes
Dimming interface	Dimmer Integrated
Plug type	Type A
Batteries inside	No

## Bulbs



NOT INCLUDED

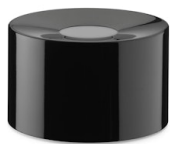
RF34656

9W E26 A19 Led Lamp

Spare Parts



01.	Ray Floor 1-Table diffuser	RF16084
02.	Porcelain E26 Lamp holder	RF34592
03.	Ray Table Kit of quantity 4 adjustable feet	RF5912200
04.	diffuser support	RF15854
05.	Black Dimmer Switch	RF28206



RF16084  
Ray Floor 1-Table diffuser



RF34592  
Porcelain E26 Lamp holder



RF5912200  
Ray Table Kit of quantity 4  
adjustable feet



RF15854  
diffuser support



RF28206  
Black Dimmer Switch