

Profile 1000mm Dimmable

NEW

Designed by FLOS Architectural, 2023

Ceiling surface, Wall surface

Interior electromechanical profile (24Vdc) from 1 to 3m long for wall or ceiling installation, fastened with special screws and plugs provided with the profile. Request power connectors, intermediate connectors and covers separately. Feed unit joints available in the form of L, T and X in the same plane. It also has a linear electric connector for joining two track sections in the same plane and a 90° electromechanical connector for joining profile sections in different planes (interior wall-wall, ceiling-wall). Aesthetic covers for the inner profile gap available as an option.

Are you a professional and your project needs consulting and support?

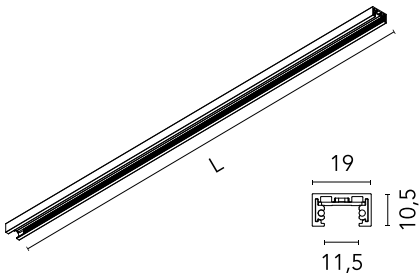
BOOK AN APPOINTMENT

Main specifications

Mounting	Ceiling surface, Wall surface
Environments	Indoor dry location
Light sources included	No

Physical

Colour	Brushed Bronze
Net weight (kg)	0.3
IP internal	20



Download

Mounting instructions

PDF



Photometric

Extreme cut off No

Electrical

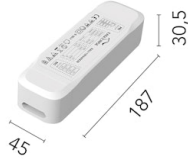
Insulation class	III
Forward voltage (V)	24
Power supply	Remote excluded
Dimmable	Yes
Power supply type	Dimmable
Dimming interface	Remote Dimmable (Dimmer Not Included)

Accessories & Power Supply



REQUIRED
Power supply
Electrical

60.9352
LED power supply source for remote installation in 24V/200W electric control panel. To avoid problems of overload it is recommended to install a power source every 185W. 100/240V.



REQUIRED
Power supply
Electrical

60.9705
Remote Power Supply Non Dimmable 24V. 60W. 220/240V



REQUIRED
Power supply
Electrical

60.9777A
Remote Power Supply Non Dimmable 24V. 120W. 220/240V



REQUIRED
Power supply
06.2619.ES
Power Supply Surface End
Dimmable / Non Dimmable



REQUIRED
Power supply
06.2620.ES
Power Supply Surface Middle
Dimmable / Non Dimmable



REQUIRED
Connector
06.2606.ES
Live End Feed Dimmable



REQUIRED
Connector
06.2607.ES
Linear Connector Feed Dimmable



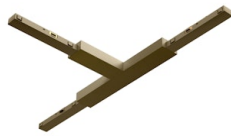
REQUIRED
Component
06.2617.ES
Blind End



REQUIRED
Corner

06.2609.ES

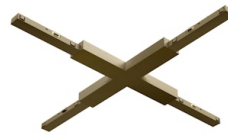
90° Corner Feed Dimmable



REQUIRED
Connector

06.2611.ES

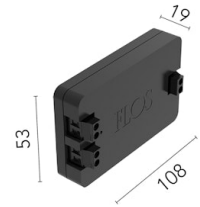
T Connector Feed Dimmable



REQUIRED
Connector

06.2612.ES

X Connector Feed Dimmable

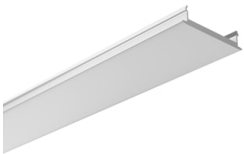


OPTIONAL
Power supply

Electrical

08.0613.14A

Dimmable control box 1-10V,
24/48V. For remote installation.

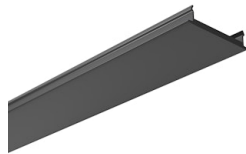


OPTIONAL
Component

Installation

06.2618.40A

Track Cover 3000mm



OPTIONAL
Component

Installation

06.2618.14A

Track Cover 3000mm



OPTIONAL
Connector

Electrical

06.2608.14

Straight Connector



OPTIONAL
Connector

Electrical

06.2608.40

Straight Connector