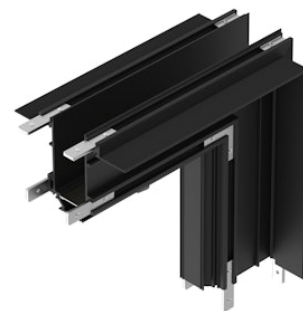


Outer Corner. Can be powered

Designed by FLOS Architectural, 2015



Length: 150 - Wall recessed, Ceiling recessed

Are you a professional and your project needs consulting and support?

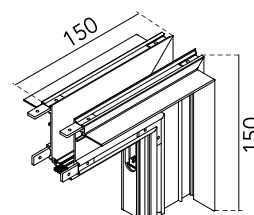
BOOK AN APPOINTMENT

Main specifications

Mounting	Wall recessed, Ceiling recessed
Environments	Indoor dry location
Light sources included	no

Physical

Colour	Black
Trim	No
Recessed depth (mm)	86
Length (mm)	150
Net weight (kg)	0.76
IP internal	20
IP external	20



Download

Mounting instructions

↓ PDF



Photometric

Extreme cut off No

Electrical

Forward voltage (V) 24

Accessories & Power Supply



OPTIONAL
Power supply
Electrical

60.9352
LED power supply source for remote installation in 24V/200W electric control panel. To avoid problems of overload it is recommended to install a power source every 185W. 100/240V.



OPTIONAL
Power supply
Electrical

60.9089
Electronic transformer with constant voltage (24V) for LED. 100/240V. 60W



OPTIONAL
Power supply
Electrical

60.9407
Electronic transformer with constant voltage (24V) for LED. 100/240V. 120W



OPTIONAL
Installation

08.8865.14A
Endcap. 2 unit kit