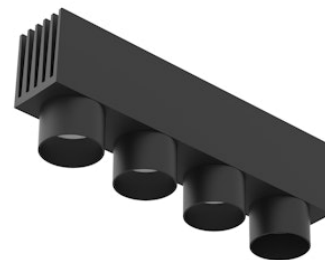


Multi Spot 4 On Board Dimmer

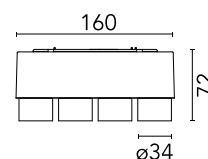
Designed by FLOS Architectural, 2016



Accent lighting LED module to be installed in The Running Magnet System. Built-in DC/DC electronic voltage converter.

Are you a professional and your project needs consulting and support?

[BOOK AN APPOINTMENT](#)



Main specifications

| | |
|------------------------|---------------------|
| Mounting | Track |
| Environments | Indoor dry location |
| Light source type | LED |
| Light sources included | Yes |
| LED type | Power LED |
| Lamp category | LED |
| Number of lamps | 1 |
| Power (W) | 10 |
| System power (W) | 11.3 |
| Source flux (lm) | 960 |
| Lumen Output (lm) | 674 |
| Efficacy (lm/W) | 59.65 |

Physical

| | |
|-----------------|-------|
| Colour | Black |
| Orientation | Fixed |
| Length (mm) | 160 |
| Net weight (kg) | 0.35 |
| IP internal | 20 |

Download

Mounting instructions [↓ PDF](#)

Photometric Files

LDT / IES [↓ ZIP](#)

Technical Drawings

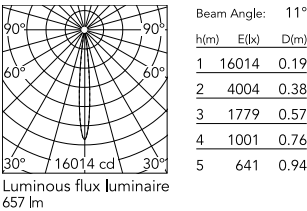
2D [↓ ZIP](#)

3D [↓ ZIP](#)

Ecodesign and Energy Labelling



Schematic light drawing



Photometric

| | |
|--------------------------|--------------------------|
| Lighting type | Direct |
| Light distribution | Symmetric |
| CCT (K) | 3000 |
| CRI> | 90 |
| McAdam steps (SDCM) | 3 |
| LED Life / Failure Ratio | L80B50>50.000h (Tc=85°C) |
| Beam angle C0-180 (°) | 11 |
| Beam angle C90-270 (°) | 11 |
| UGR _L | <10 |

Electrical

| | |
|---------------------|-------------------|
| Insulation class | III |
| Forward voltage (V) | 24 |
| Power supply | Remote excluded |
| Dimmable | Yes |
| Power supply type | Dimmer on board |
| Dimming range (%) | 40-100 |
| Dimming interface | Dimmer Integrated |

Notes

For wireless lighting control, choose integrated Casambi versions. For the sizing of the installation keep a safety margin of 15% of the maximum power of the LED power source.

Accessories & Power Supply



OPTIONAL
Accessory
Optical

08.8759.00

Elliptical lens



OPTIONAL
Accessory
Optical

08.8760.00

Frosted Medium lens



OPTIONAL
Accessory
Optical

08.8761.00

Frosted Flood lens