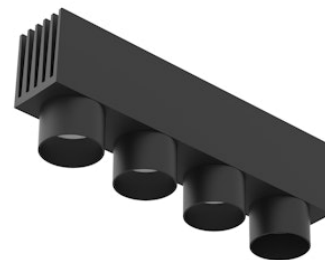


FLOS

03.6305.14C9V Black

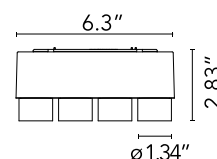
Multi Spot 4 0-10V Dimmable

Designed by FLOS Architectural, 2020



LED - Power LED - 10W - 630lm - 2700K - CRI> 90 - Beam° 11

4 accent Spot LED module can be rapidly exchanged and repositioned without tools. Light elements are quick to position and connect automatically with magnets. Built-in dimming knob dims fixture (from 20-100%), DALI and 0-10V (from 10-100%). Standard beam spread is 14° additional interchangeable lenses available in 20° and 30°, and elliptical beam spread.



Are you a professional and your project needs consulting and support?

BOOK AN APPOINTMENT

Main specifications

Mounting	Track
Environments	Indoor dry location
Light Source Type	LED
Light sources included	Yes
LED type	Power LED
Lamp category	LED
Power (W)	10
System power (W)	11.3
Source flux (lm)	878
System flux (lm)	630
Efficacy (lm/W)	55.75

Physical

Color	Black
Orientation	Fixed
Length (in)	4.7
Net weight (lb)	0.77
IP internal	20

Download

Family spec sheet	ZIP
Mounting instructions	PDF

Photometric Files

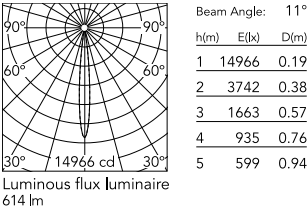
LDT / IES	ZIP
-----------	-----

Technical Drawings

2D	ZIP
3D	ZIP



Schematic light drawing



Photometric

Lighting type	Direct
Light distribution	Symmetric
CCT (K)	2700
CRI>	90
McAdam steps (SDCM)	3
LED Life / Failure Ratio	L80B50>50.000h (Tc=85°C)
Beam angle C0-180 (°)	11
Beam angle C90-270 (°)	11
UGR _L	<10

Electrical

Insulation class	III
Forward voltage (V)	24
Driver	Remote excluded
Dimmable	Yes
Dimming type	Dimmable 0-10V
Dimming range (%)	10-100
Dimming interface	Remote Dimmable (Dimmer Not Included)

Accessories & Power Supply



OPTIONAL
Accessory
Optical

08.8759.00

Elliptical lens



OPTIONAL
Accessory
Optical

08.8760.00

Frosted Medium lens



OPTIONAL
Accessory
Optical

08.8761.00

Frosted Flood lens