

FLOS

03.2220.40A White

Micro Spot NEW

Designed by FLOS Architectural, 2020



LED - Power LED - 3W - 200lm - 2700K - CRI> 90 - Beam° 28

Accent lighting LED module to be installed in The Micro Running Magnet System.
Built-in DC/DC electronic voltage converter.

Are you a professional and your project needs consulting and support?

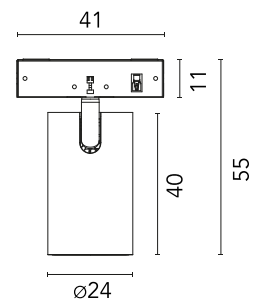
[BOOK AN APPOINTMENT](#)

Main specifications

Mounting	Track
Environments	Indoor dry location
Light source type	LED
Light sources included	Yes
LED type	Power LED
Lamp category	LED
Number of lamps	1
Power (W)	3
System power (W)	3
Source flux (lm)	275
Lumen Output (lm)	200
Efficacy (lm/W)	66.67

Physical

Colour	White
Orientation	Adjustable
Rotation (°)	267
Longitudinal tilting (°)	90
Spot diameter (mm)	24
Length (mm)	41
Net weight (kg)	0.03
IP internal	20



Download

Mounting instructions



Photometric Files

LDT / IES



Technical Drawings

2D



3D



Bim



Ecodesign and Energy Labelling



<https://professional.flos.com/en/global/product/micro-spot-03.2220.40a/>

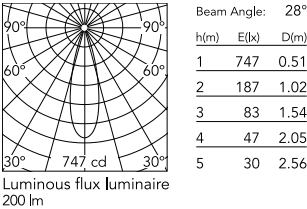
03.2220.40A

©2022 Flos - P.IVA 00290820174 - 11/28/2025

professional.flos.com | info@flos.com 1/3

In our constantly evolving world and business, technical upgrades happen every day. This means all product specifications and data are subject to change without warning in order to improve reliability, function, performance or otherwise. We make every effort to ensure the accuracy of our product images, however due to different lighting and screens used for viewing, the colours may vary. Images are indicative of the quality and style of the product but may not represent the precise details of the product you receive. This is because we are constantly working to make improvements. For aesthetic reasons, cables and/or electrical elements are often not shown. Refer to technical data sheets for all technical data. Images and colours are not part of any contract or warranty in any way.

Schematic light drawing



Photometric

Lighting type	Direct
Light distribution	Symmetric
CCT (K)	2700
CRI>	90
McAdam steps (SDCM)	2
Beam angle C0-180 (°)	28
Beam angle C90-270 (°)	28
UGR _L	<16

Electrical

Insulation class	III
Forward voltage (V)	24
Power supply	Remote excluded
Dimmable	Yes
Power supply type	Non Dimmable, Dimmable
Dimming interface	Remote Dimmable (Dimmer Not Included)



OPTIONAL
Accessory

Optical

08.0190.14

Honeycomb for Micro Spot