

# FLOS

03.6806.40A1V White

## Light Supply Adjustable Trim Dimmable

Designed by FLOS Architectural, 2017

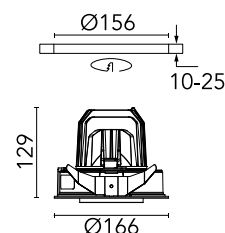
LED - LED array - 30.1W - 1698lm - 3000K - CRI> 90 - Beam° 13



Recessed luminaire with LED light source. Remote 220/240V power supply included.

Are you a professional and your project needs consulting and support?

[BOOK AN APPOINTMENT](#)



### Main specifications

Mounting	Ceiling recessed
Environments	Indoor dry location
Light source type	LED
Light sources included	Yes
LED type	LED array
Lamp category	LED
Number of lamps	1
Power (W)	30.1
Source flux (lm)	2910
Lumen Output (lm)	1698

### Physical

Colour	White
Trim	No
Orientation	Adjustable
Rotation (°)	355
Longitudinal tilting (°)	35
Recessed depth (mm)	239
Net weight (kg)	1.01
IP internal	20
IP external	23

### Download

Mounting instructions [↓ PDF](#)

### Photometric Files

LDT / IES [↓ ZIP](#)

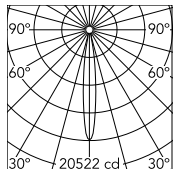
### Technical Drawings

2D [↓ ZIP](#)

3D [↓ ZIP](#)



## Schematic light drawing



Beam Angle: 13°

h(m)	E(lx)	D(m)
1	20522	0.23
2	5131	0.46
3	2280	0.69
4	1283	0.92
5	821	1.15

Luminous flux luminaire  
1698 lm (EXTREME CUT OFF)

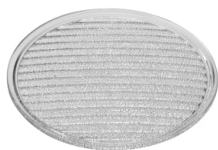
### Photometric

Lighting type	Direct
Light distribution	Symmetric
CCT (K)	3000
CRI>	90
Beam angle C0-180 (°)	13
Beam angle C90-270 (°)	13
Extreme cut off	No

### Electrical

Insulation class	II
Frequency (Hz)	50/60
Main voltage (Vac)	220-240
Power supply	Remote included
Dimmable	Yes
Power supply type	Dimmable 1-10V

## Accessories & Power Supply



OPTIONAL  
Accessory

08.8118.68

Elliptical lens



OPTIONAL  
Accessory

08.8242.14

Screening crosspiece



OPTIONAL  
Accessory

08.8377.14

Honeycomb. Big Cells



OPTIONAL  
Accessory

08.8450.00

Light Supply Adjustable spare  
reflector. Spot



OPTIONAL  
Accessory

08.8451.00

Light Supply Adjustable spare  
reflector. Medium



OPTIONAL  
Accessory

08.8452.00

Light Supply Adjustable spare  
reflector. Flood



OPTIONAL  
Accessory

08.8453.40

Highly-efficient cylinder