

FLOS

03.6806.14A Black

Light Supply Adjustable Trim

Designed by FLOS Architectural, 2017

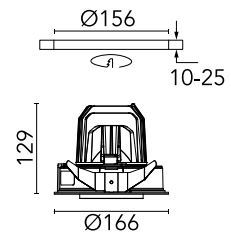
LED - LED array - 30.1W - 1698lm - 3000K - CRI> 90 - Beam° 13



Recessed luminaire with LED light source. Remote 220/240V power supply included.

Are you a professional and your project needs consulting and support?

[BOOK AN APPOINTMENT](#)



Main specifications

Mounting	Ceiling recessed
Environments	Indoor dry location
Light source type	LED
Light sources included	Yes
LED type	LED array
Lamp category	LED
Number of lamps	1
Power (W)	30.1
Source flux (lm)	2901
Lumen Output (lm)	1698

Physical

Colour	Black
Trim	No
Orientation	Adjustable
Rotation (°)	355
Longitudinal tilting (°)	35
Recessed depth (mm)	239
Net weight (kg)	1.01
IP internal	20
IP external	23

Download

Mounting instructions [↓ PDF](#)

Photometric Files

LDT / IES [↓ ZIP](#)

Technical Drawings

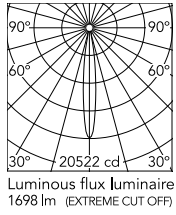
2D [↓ ZIP](#)

3D [↓ ZIP](#)

[Bim](#) [↓ ZIP](#)



Schematic light drawing



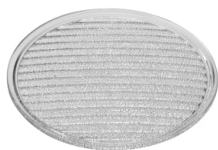
Photometric

Lighting type	Direct
Light distribution	Symmetric
CCT (K)	3000
CRI>	90
Beam angle C0-180 (°)	13
Beam angle C90-270 (°)	13
UGR _L	<10

Electrical

Insulation class	II
Frequency (Hz)	50/60
Forward voltage (V)	37.6
Power supply	Remote included
Dimmable	No
Power supply type	Non Dimmable
Emergency	No

Accessories & Power Supply



OPTIONAL
Accessory

08.8118.68

Elliptical lens



OPTIONAL
Accessory

08.8242.14

Screening crosspiece



OPTIONAL
Accessory

08.8377.14

Honeycomb. Big Cells



OPTIONAL
Accessory

08.8450.00

Light Supply Adjustable spare
reflector. Spot



OPTIONAL
Accessory

08.8451.00

Light Supply Adjustable spare
reflector. Medium



OPTIONAL
Accessory

08.8452.00

Light Supply Adjustable spare
reflector. Flood



OPTIONAL
Accessory

08.8453.40

Highly-efficient cylinder