

## Light Supply Adjustable Trim

Designed by FLOS Architectural, 2017

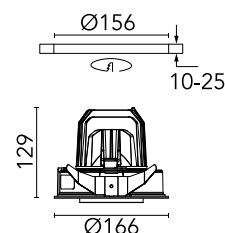
LED - LED array - 30.1W - 1846lm - 4000K - CRI> 90 - Beam° 13

Recessed luminaire with LED light source. Remote 220/240V power supply included.



Are you a professional and your project needs consulting and support?

BOOK AN APPOINTMENT



### Main specifications

Mounting	Ceiling recessed
Environments	Indoor dry location
Light source type	LED
Light sources included	Yes
LED type	LED array
Lamp category	LED
Number of lamps	1
Power (W)	30.1
Source flux (lm)	3153
Lumen Output (lm)	1846

### Physical

Colour	Black
Trim	No
Orientation	Adjustable
Rotation (°)	355
Longitudinal tilting (°)	35
Recessed depth (mm)	239
Net weight (kg)	1.01
IP internal	20
IP external	23

### Download

Mounting instructions [↓ PDF](#)

### Photometric Files

LDT / IES [↓ ZIP](#)

### Technical Drawings

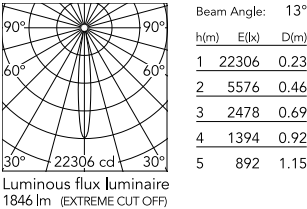
2D [↓ ZIP](#)

3D [↓ ZIP](#)

[Bim](#) [↓ ZIP](#)



Schematic light drawing



Photometric

Lighting type	Direct
Light distribution	Symmetric
CCT (K)	4000
CRI>	90
Beam angle C0-180 (°)	13
Beam angle C90-270 (°)	13
UGR <sub>L</sub>	<10

Electrical

Insulation class	II
Frequency (Hz)	50/60
Forward voltage (V)	37.6
Power supply	Remote included
Dimmable	No
Power supply type	Non Dimmable
Emergency	No

Accessories & Power Supply



OPTIONAL  
Accessory

08.8118.68

Elliptical lens



OPTIONAL  
Accessory

08.8242.14

Screening crosspiece



OPTIONAL  
Accessory

08.8377.14

Honeycomb. Big Cells



OPTIONAL  
Accessory

08.8450.00

Light Supply Adjustable spare  
reflector. Spot



OPTIONAL  
Accessory

08.8451.00

Light Supply Adjustable spare  
reflector. Medium



OPTIONAL  
Accessory

08.8452.00

Light Supply Adjustable spare  
reflector. Flood



OPTIONAL  
Accessory

08.8453.40

Highly-efficient cylinder