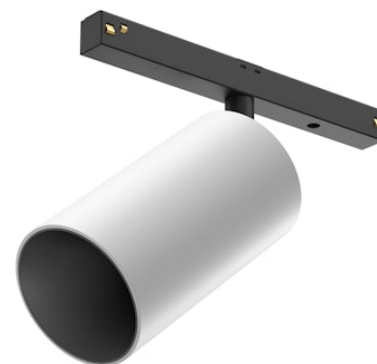




05.9061.40 White

Light Shadow Spot 60 On Board Dimmer

Designed by FLOS Architectural, 2022



20W - 1251lm - 2700K - CRI> 90 - Beam° 15

LED accent lighting module for installation in The Tracking Magnet or Infra-Structure systems. For wireless control of luminaires, please select Casambi integrated versions. Accessories available, (honeycomb and CCT dichroic filters).

Are you a professional and your project needs consulting and support?

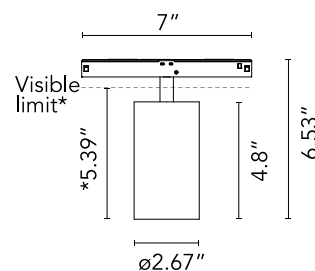
BOOK AN APPOINTMENT

Main specifications

Mounting	Track
Environments	Indoor dry location
Light Source Type	LED
Light sources included	Yes
LED type	LED array
Number of lamps	1
Power (W)	20
Source flux (lm)	1593
System flux (lm)	1251

Physical

Color	White
Orientation	Adjustable
Rotation (°)	360
Longitudinal tilting (°)	90
Net weight (lb)	1.02
IP internal	20



*installed in The Tracking Magnet

Download

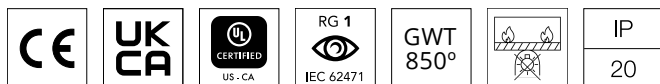
Family spec sheet	ZIP
Family spec sheet	ZIP
Mounting instructions	PDF

Photometric Files

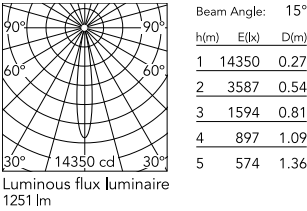
LDT / IES	ZIP
-----------	-----

Technical Drawings

2D	ZIP
3D	ZIP



Schematic light drawing



Photometric

Lighting type	Direct
Light distribution	Symmetric
CCT (K)	2700
CRI>	90
Rf fidelity index	93
Rg gamut index	99
LED Life / Failure Ratio	L80B50>47.000h_Tc85°C
Beam angle C0-180 (°)	15
Beam angle C90-270 (°)	15
UGR _L	<10

Electrical

Insulation class	III
Forward voltage (V)	48
LED current (mA)	500
Driver	Remote excluded
Dimmable	No
Dimming type	Non Dimmable

Ecodesign and Energy Labelling

This product contains a light source of energy efficiency class **G**



Replaceable (LED only) light source by a professional



Replaceable control gear by a professional

Accessories & Power Supply



OPTIONAL
Accessory
08.0175.14
Honeycomb



OPTIONAL
Accessory
08.0176.14
Honeycomb



OPTIONAL
Filter
Optical
08.0796.00
CCT Increaser Filter D58



OPTIONAL
Filter
Optical
08.0797.00
CCT Decreaser Filter D12



OPTIONAL
Filter
Optical
08.0798.00
CCT Increaser Filter D58



OPTIONAL
Filter
Optical
08.0799.00
CCT Decreaser Filter D12