

FLOS

03.9892.EQ.UQ Copper

Light Shadow Pro Ø 90 Wall-Washer - Non IC

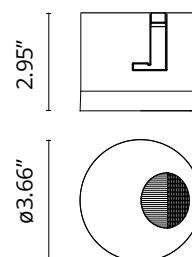
Designed by FLOS Architectural



LED lighting module, with wall washer optic, to be inserted in the recessed frames (not included), installation through a bayonet system with interchangeable spots. Remote driver not included.

Are you a professional and your project needs consulting and support?

BOOK AN APPOINTMENT



Main specifications

Mounting	Ceiling recessed
Environments	Indoor dry location
Light Source Type	LED
Light sources included	Yes
LED type	LED array
Lamp category	LED
Number of lamps	1
Power (W)	14.8
Source flux (lm)	1815
System flux (lm)	1219

Physical

Color	Copper
Orientation	Directional
Net weight (lb)	0.89
Package volume (in)	427.14
IP internal	20
IP external	54

Download

Family spec sheet [ZIP](#)

Mounting instructions [PDF](#)

Photometric Files

LDT / IES [ZIP](#)

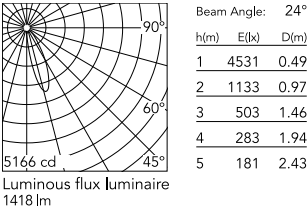


Ecodesign and Energy Labelling

 Replaceable (LED only) light source by a professional

 Replaceable control gear by a professional

Schematic light drawing



Photometric

Lighting type	Direct
Light distribution	Asymmetric
CCT (K)	4000
CRI>	90
McAdam steps (SDCM)	2
LED Life / Failure Ratio	L70B40 >50.000h (Tc=85°C)
Beam angle C0-180 (°)	24
Beam angle C90-270 (°)	24
UGR _L	<19

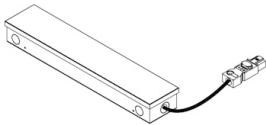
Electrical

Forward voltage (V)	74
LED current (mA)	400
Driver	Attached Splice Box
Dimmable	Yes
Dimming type	Dimmable
Dimming interface	Remote Dimmable (Dimmer Not Included)

Notes

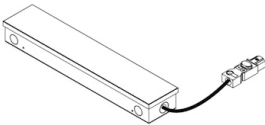
Class 2 Listed.

Accessories & Power Supply



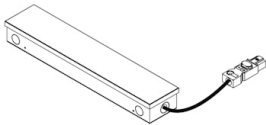
REQUIRED
Power supply

SP30W400MA-120-U01
Splice Box 7"x2.22"x1.25", 400mA
, 30W, 0-10V Dimmable, Thermal
120V



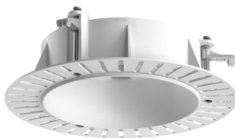
REQUIRED
Power supply

SP30W400MA-277-U01
Splice Box 7"x2.22"x1.25", 400mA
, 30W, 0-10V Dimmable, Thermal
277V



REQUIRED
Power supply

SP30W400MA-ELV-U01
Splice Box 7"x2.22"x1.25",
400mA , 30W, ELV Dimmable,
Thermal 120V



REQUIRED
Frame

08.0193.00
Installation Frame No Trim Ø90
Fix



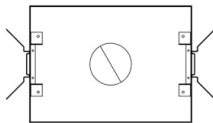
REQUIRED
Frame

08.0161.14
Installation Frame Trim Ø90 Fix



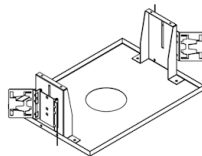
REQUIRED
Frame

08.0161.40
Installation Frame Trim Ø90 Fix



OPTIONAL
Housing and Hanger Bar

TRAY-0016
Registration Tray - non electrical,
place holder for non IC new
construction Round, Ø4"



OPTIONAL
Housing and Hanger Bar

TRAY-0019
Registration Tray - non electrical,
place holder for non IC new
construction, Ø4.75"