

FLOS

03.9940.EQ.UQ Copper

Light Shadow Pro Ø 90 Adjustable Optic Super Spot - Non IC NEW

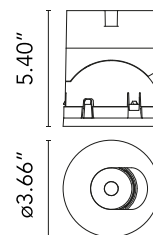
Designed by FLOS Architectural



LED lighting module, with low glare, to be inserted in the recessed frames (not included), installation through a bayonet system with interchangeable spots. Remote driver not included.

Are you a professional and your project needs consulting and support?

BOOK AN APPOINTMENT



Main specifications

Mounting	Ceiling recessed
Environments	Indoor dry location
Light Source Type	LED
Light sources included	Yes
LED type	LED array
Lamp category	LED
Number of lamps	1
Power (W)	8.8
Source flux (lm)	949
System flux (lm)	793

Physical

Color	Copper
Orientation	Adjustable
Rotation (°)	355
Longitudinal tilting (°)	35
Transversal tilting (°)	35
Net weight (lb)	0.49
Package volume (in)	244.08
IP internal	20

Download

Family spec sheet [ZIP](#)

Mounting instructions [PDF](#)

Photometric Files

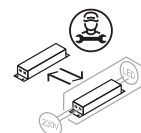
LDT / IES [ZIP](#)



Ecodesign and Energy Labelling

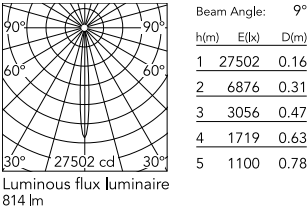


Replaceable (LED only) light source by a professional



Replaceable control gear by a professional

Schematic light drawing



Photometric

Lighting type	Direct
Light distribution	Symmetric
CCT (K)	4000
CRI>	90
McAdam steps (SDCM)	2
LED Life / Failure Ratio	L70B40 >50.000h (Tc=85°C)
Beam angle C0-180 (°)	9
Beam angle C90-270 (°)	9
UGR _L	<10

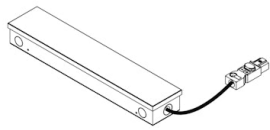
Electrical

Forward voltage (V)	15.7
LED current (mA)	700
Driver	Attached Splice Box
Dimmable	Yes
Dimming type	Dimmable
Dimming interface	Remote Dimmable (Dimmer Not Included)

Notes

Class 2 Listed.

Accessories & Power Supply

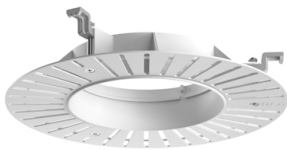


REQUIRED
Power supply

Electrical

06.0319.00.90

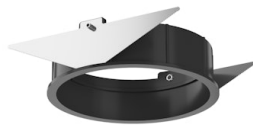
Splice Box UL 120V 700mA 1-10V



REQUIRED
Frame

08.0167.00

Installation Frame No Trim Ø90



REQUIRED
Frame

08.0165.14

Installation Frame Trim Ø90

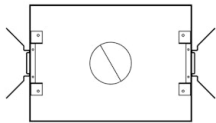


OPTIONAL
Accessory

Mounting

08.0826.00

Orientation Toolkit



OPTIONAL
Housing and Hanger Bar

TRAY-0016

Registration Tray - non electrical,
place holder for non IC new
construction Round, Ø4"