

# FLOS

03.9940.40.UQ White

## Light Shadow Pro Ø 90 Adjustable Optic Super Spot - Non IC NEW

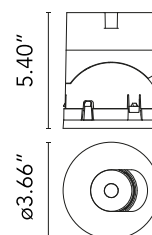
Designed by FLOS Architectural, 2020



LED lighting module, with low glare, to be inserted in the recessed frames (not included), installation through a bayonet system with interchangeable spots. Remote driver not included.

Are you a professional and your project needs consulting and support?

[BOOK AN APPOINTMENT](#)



### Main specifications

Mounting	Ceiling recessed
Environments	Indoor dry location
Light Source Type	LED
Light sources included	Yes
LED type	LED array
Lamp category	LED
Number of lamps	1
Power (W)	8.8
Source flux (lm)	949
System flux (lm)	839

### Physical

Color	White
Orientation	Adjustable
Rotation (°)	355
Longitudinal tilting (°)	35
Transversal tilting (°)	35
Length (in)	3.55
Net weight (lb)	0.53
Package height (in)	6.19
Package width (in)	8.27
Package length (in)	5.32
Package volume (in)	62
IP internal	20
IP external	54

### Download

Family spec sheet	<a href="#">↓ ZIP</a>
Mounting instructions	<a href="#">↓ PDF</a>

### Photometric Files

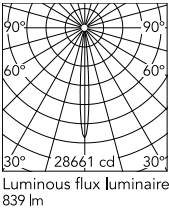
LDT / IES	<a href="#">↓ ZIP</a>
-----------	-----------------------

### Technical Drawings

2D	<a href="#">↓ ZIP</a>
3D	<a href="#">↓ ZIP</a>



## Schematic light drawing

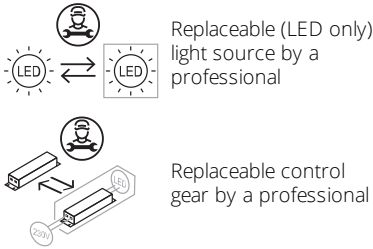


Beam Angle: 9°

h(m)	E(lx)	D(m)
1	28661	0.16
2	7165	0.31
3	3185	0.47
4	1791	0.62
5	1146	0.78

Luminous flux luminaire  
839 lm

## Ecodesign and Energy Labelling



## Photometric

Lighting type	Direct
Light distribution	Symmetric
CCT (K)	4000
CRI>	90
McAdam steps (SDCM)	2
LED Life / Failure Ratio	L70B40 >50.000h (Tc=85°C)
Beam angle C0-180 (°)	9
Beam angle C90-270 (°)	9
Extreme cut off	No
UGR <sub>L</sub>	<10

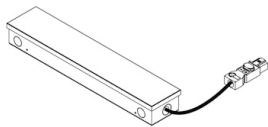
## Electrical

Forward voltage (V)	12
LED current (mA)	700
Driver	Attached Splice Box
Dimmable	Yes
Dimming type	Dimmable
Dimming interface	Remote Dimmable (Dimmer Not Included)

## Notes

Class 2 Listed.

Accessories & Power Supply

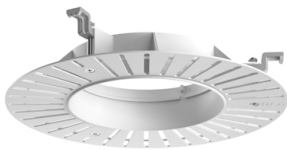


REQUIRED  
Power supply

Electrical

06.0319.00.90

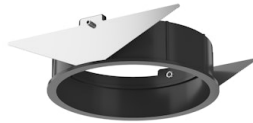
Splice Box UL 120V 700mA 1-10V



REQUIRED  
Frame

08.0167.00

Installation Frame No Trim Ø90



REQUIRED  
Frame

08.0165.14

Installation Frame Trim Ø90

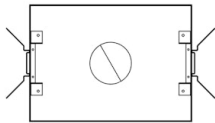


OPTIONAL  
Accessory

Mounting

08.0826.00

Orientation Toolkit



OPTIONAL  
Housing and Hanger Bar

TRAY-0016

Registration Tray - non electrical,  
place holder for non IC new  
construction Round, Ø4"