

# FLOS

03.9941.ES.98 Bronze

## Light Shadow Pro Ø 90 Adjustable Optic Spot - Airtight IC Rated - JA8 NEW

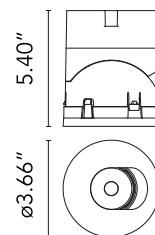
Designed by FLOS Architectural, 2020



LED lighting module, with low glare, to be inserted in the recessed frames (not included), installation through a bayonet system with interchangeable spots. Remote driver not included.

Are you a professional and your project needs consulting and support?

[BOOK AN APPOINTMENT](#)



### Main specifications

Mounting	Ceiling recessed
Environments	Indoor dry location
Light Source Type	LED
Light sources included	Yes
LED type	LED array
Lamp category	LED
Number of lamps	1
Power (W)	12.6
Source flux (lm)	1877
System flux (lm)	1555
Efficacy (lm/W)	75.86

### Physical

Color	Bronze
Orientation	Adjustable
Rotation (°)	355
Longitudinal tilting (°)	35
Transversal tilting (°)	35
Net weight (lb)	0.49
Package volume (in)	245
IP internal	20

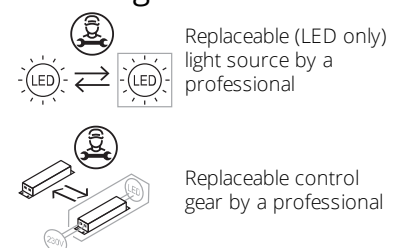
### Download

Family spec sheet [ZIP](#)  
Mounting instructions [PDF](#)

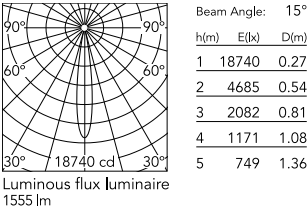
### Photometric Files

LDT / IES [ZIP](#)

### Ecodesign and Energy Labelling



Schematic light drawing



Photometric

Lighting type	Direct
Light distribution	Symmetric
CCT (K)	4000
CRI>	90
McAdam steps (SDCM)	2
Rf fidelity index	90
LED Life / Failure Ratio	L70B40 >50.000h (Tc=85°C)
Beam angle C0-180 (°)	16
Beam angle C90-270 (°)	16
UGR <sub>L</sub>	<10

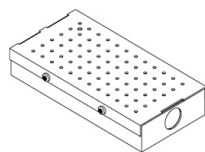
Electrical

Frequency (Hz)	50/60
Forward voltage (V)	36
LED current (mA)	350
Driver	Remote from housing
Dimmable	Yes
Dimming interface	Remote Dimmable (Dimmer Not Included)

Notes

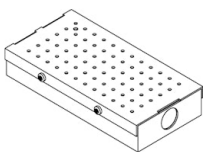
Class 2

Accessories & Power Supply



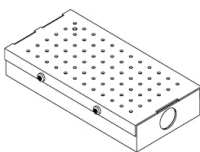
REQUIRED  
Power supply  
Electrical

SP20W350MA-PEQ-S01  
Lutron 20W, 0.15 - 1.05A, 10-54Vdc Eco 0.1%



REQUIRED  
Power supply  
Electrical

SP22W350MA-VAR-C01  
Splice Box 350-700mA, 28 -42 Vdc, Tri mode

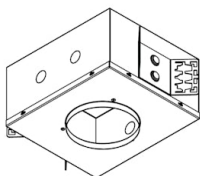


REQUIRED  
Power supply  
Electrical

SP25W350MA-10V-A02  
SP25W350MA-10V-A02

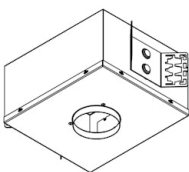


REQUIRED  
Housing and Hanger Bar  
08.1201.00.UL  
Bar Hanger Set , Male-Female (set of 2)



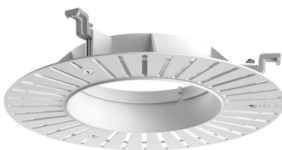
REQUIRED  
Housing and Hanger Bar  
Installation

08.7075.00.90  
Light Shadow PRO 90 Adj  
Trimless Airtight Housing for New construction, Remote Driver see options below. CCEA Chicago Plenum



REQUIRED  
Housing and Hanger Bar  
Installation

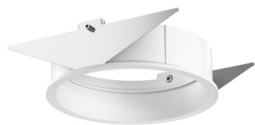
08.7071.00A90  
Light Shadow PRO 90 Trim Fixed & Adjustable Airtight Housing for New construction, Remote Driver see options below. CCEA Chicago Plenum



REQUIRED  
Frame  
08.0167.00  
Installation Frame No Trim Ø90



REQUIRED  
Frame  
08.0165.14  
Installation Frame Trim Ø90



## REQUIRED Frame

08.0165.40

Installation Frame Trim Ø90