

FLOS

03.9987.14 Black

Light Shadow Pro Ø 90 Adjustable Optic Medium

Designed by FLOS Architectural, 2020

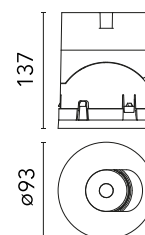


LED - LED array - 18W - 1397lm - 3000K - CRI> 90 - Beam° 23

LED lighting module, with low glare, to be inserted in the recessed frames (not included), installation through a bayonet system with interchangeable spots. Remote driver not included.

Are you a professional and your project needs consulting and support?

BOOK AN APPOINTMENT



Main specifications

Mounting	Recessed
Environments	Indoor dry location
LED type	LED array
Lamp category	LED
Ilcos	No
Number of heads	1
Power (W)	18
Source flux (lm)	1722
System flux (lm)	1397

Physical

Colour	Black
Orientation	Adjustable
Rotation (°)	355
Longitudinal tilting (°)	35
Transversal tilting (°)	35
Recessed depth (mm)	149
Spot diameter (mm)	90
Net weight (kg)	0.54
IP internal	20
IP external	20

Download

Mounting instructions [Download PDF](#)

Photometric Files

LDT / IES [Download ZIP](#)

Technical Drawings

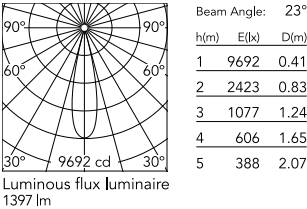
2D [Download ZIP](#)

3D [Download ZIP](#)

[Bim](#) [Download ZIP](#)



Schematic light drawing



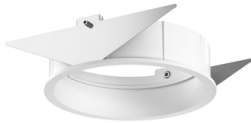
Photometric

Lighting type	Direct
Light distribution	Symmetric
CCT (K)	3000
CRI>	90
McAdam steps (SDCM)	2
LED Life / Failure Ratio	L70B40 >50.000h (Tc=85°C)
Beam angle C0-180 (°)	23
Beam angle C90-270 (°)	23

Electrical

Insulation class	III
Forward voltage (V)	35.9
LED current (mA)	500
Driver	Remote excluded
Dimmable	Yes
Dimming type	Non Dimmable, Dimmable DALI 2, Dimmable, Dimmable Casambi, Dimmable 1-10V, Dimmable DALI 1, Mains Cut Dimming
Emergency type	No

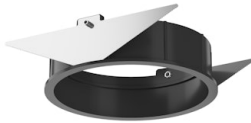
Accessories & Power Supply



REQUIRED
Frame

08.0165.40

Installation Frame Trim



REQUIRED
Frame

08.0165.14

Installation Frame Trim



REQUIRED
Power supply

Electrical

60.9162

Continuous current power supply 220/240V - 50/60Hz. Adjustable Current 300mA-13W / 350mA-15W / 400mA-18W / 450mA-20W / 500mA-22W / 550mA-24W / 600mA-27W / 650mA-29W / 700mA-31W / 750mA-32W / 800mA-33W / 850mA-35W / 900mA-38W / 950mA-40W / 1000/1050mA-4...



REQUIRED
Power supply

Electrical

60.9188

Continuous current power supply of 13-20W, 110*/240V - 50/60Hz with power current selected through adjustable 200 mA - 13W / 300 mA - 15W / 350 mA - 18W / 400 / 450 / 500 / 550 / 600 / 650 / 700 / 750 / 800 / 850 / 900 mA - 20W. switch. 0/1-10V or push...



REQUIRED
Power supply

Electrical

60.9207



REQUIRED
Power supply

Electrical

60.9439



REQUIRED
Power supply

Electrical

60.9186

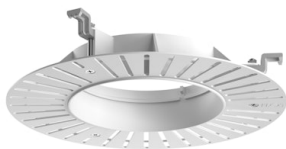


REQUIRED
Power supply

Electrical

60.9467

Continuous current power supply, dimmable Casambi, 220/240V - 50/60Hz, 300mA - 16W / 350mA - 18,5W / 400mA - 21,5W / 450 mA - 24W / 500mA - 27W / 600mA - 32W / 650 mA - 35W / 700 mA - 36W /750 /800 /900 /1000 /1050 /1200 mA - 38W.	Continuous current power supply, 0/1-10V dimmable, 220/240V - 50/60Hz, 300mA- 16W / 350mA-18W / 400mA- 21W / 500mA-27W / 600mA- 32W / 650mA-35W /700 /750 /800 /900/ 950/ 1000 /1050mA- 36W	Continuous current supply source of 240V - 50/60Hz with dimmable Dali 2, push dimming. 300mA - 16W / 350mA - 18W / 400mA - 21W / 500mA - 27W / 600mA - 32W / 650 mA - 35W / 700 / 750 / 800 / 900 / 1000 / 1050 mA - 36W	20W Constant current power supply, AC phase-cut adjustable, trailing & leading edge dimming (mains dimming), 220/240V - 50/60Hz, with dip-switch programmable power supply current. Output current: 900mA - 20W / 850mA - 20W / 800mA - 20W / 750mA - 20W / ...
--	---	--	---



REQUIRED Frame

08.0167.00

Installation Frame No Trim