

# FLOS

03.9932.40AUQ White

## Light Shadow Pro Ø 60 Adjustable Optic Medium - Non IC NEW

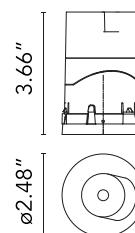
Designed by FLOS Architectural, 2020



LED lighting module, with low glare, to be inserted in the recessed frames (not included), installation through a bayonet system with interchangeable spots. Remote driver not included.

Are you a professional and your project needs consulting and support?

[BOOK AN APPOINTMENT](#)



### Main specifications

Mounting	Ceiling recessed
Environments	Indoor dry location
Light Source Type	LED
Light sources included	Yes
LED type	LED array
Lamp category	LED
Number of lamps	1
Power (W)	8.8
Source flux (lm)	750
System flux (lm)	760

### Physical

Color	White
Orientation	Adjustable
Rotation (°)	355
Longitudinal tilting (°)	30
Transversal tilting (°)	30
Net weight (lb)	0.49
Package height (in)	6.19
Package width (in)	8.27
Package length (in)	5.32
Package volume (in)	244.08
IP internal	20

### Download

Family spec sheet	<a href="#">ZIP</a>
Mounting instructions	<a href="#">PDF</a>

### Photometric Files

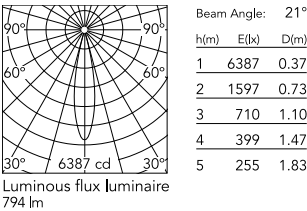
LDT / IES	<a href="#">ZIP</a>
-----------	---------------------

### Technical Drawings

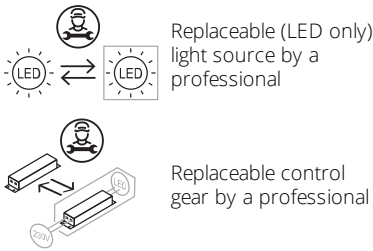
2D	<a href="#">ZIP</a>
3D	<a href="#">ZIP</a>



Schematic light drawing



Ecodesign and Energy Labelling



Photometric

Lighting type	Direct
Light distribution	Symmetric
CCT (K)	4000
CRI>	90
Rf fidelity index	92
Rg gamut index	100
LED Life / Failure Ratio	L80B50>50.000h (Tc=85°C)
Beam angle C0-180 (°)	21
Beam angle C90-270 (°)	21
Extreme cut off	No
UGR <sub>L</sub>	<10

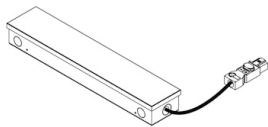
Electrical

Forward voltage (V)	18.5
LED current (mA)	700
Driver	Attached Splice Box
Dimmable	Yes
Dimming interface	Remote Dimmable (Dimmer Not Included)

Notes

Class 2 Listed.

Accessories & Power Supply



REQUIRED  
Power supply

Electrical

06.0319.00.90

Splice Box UL 120V 700mA 1-10V



REQUIRED  
Frame

08.0166.00

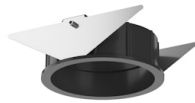
Installation Frame No Trim Ø60



REQUIRED  
Frame

08.0164.40

Installation Frame Trim Ø60



REQUIRED  
Frame

08.0164.14

Installation Frame Trim Ø60

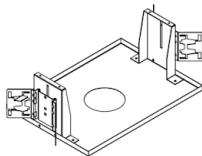


OPTIONAL  
Accessory

Mounting

08.0825.00

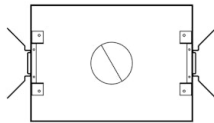
Orientation Toolkit



OPTIONAL  
Housing and Hanger Bar

TRAY-0019

Registration Tray - non electrical, place holder for non IC new construction, Ø4.75"



OPTIONAL  
Housing and Hanger Bar

TRAY-0001

Registration Tray - non electrical, place holder for non IC new construction, Ø2.95"