

# FLOS

03.9973.14A Black

## Light Shadow Pro Ø 60 Adjustable Optic Flood

Designed by FLOS Architectural, 2020

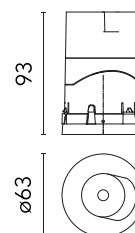


10.5W - 731lm - 2700K - CRI> 90 - Beam° 31

LED lighting module, with low glare, to be inserted in the recessed frames (not included), installation through a bayonet system with interchangeable spots. Remote driver not included.

Are you a professional and your project needs consulting and support?

BOOK AN APPOINTMENT



### Main specifications

Mounting	Ceiling recessed
Environments	Indoor dry location
Light source type	LED
Light sources included	Yes
LED type	LED array
Number of lamps	1
Power (W)	10.5
Source flux (lm)	1148
Lumen Output (lm)	731
Efficacy (lm/W)	70

### Physical

Colour	Black
Orientation	Adjustable
Rotation (°)	355
Longitudinal tilting (°)	30
Transversal tilting (°)	30
Spot diameter (mm)	60
Net weight (kg)	0.22
Package height (mm)	157
Package width (mm)	210
Package length (mm)	135
IP internal	20

### Download

Mounting instructions [↓ PDF](#)

### Photometric Files

LDT / IES [↓ ZIP](#)

### Technical Drawings

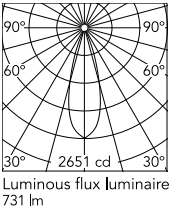
2D [↓ ZIP](#)

3D [↓ ZIP](#)

[Bim](#) [↓ ZIP](#)



## Schematic light drawing

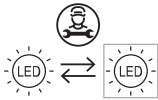


Beam Angle: 31°

h(m)	E(lx)	D(m)
1	2651	0.55
2	663	1.11
3	295	1.66
4	166	2.22
5	106	2.77

## Ecodesign and Energy Labelling

This product contains a light source of energy efficiency class E



Replaceable (LED only) light source by a professional

## Photometric

Lighting type	Direct
Light distribution	Symmetric
CCT (K)	2700
CRI>	90
McAdam steps (SDCM)	2
Rf fidelity index	93
Rg gamut index	99
LED Life / Failure Ratio	L70B40 > 50.000h (Tc=85°C)
Beam angle C0-180 (°)	31
Beam angle C90-270 (°)	31
Extreme cut off	Yes
UGR <sub>L</sub>	<10

## Electrical

Insulation class	III
Forward voltage (V)	12.5
LED current (mA)	800
Power supply	Remote excluded
Dimmable	Yes
Power supply type	Non Dimmable, Dimmable DALI 2, Dimmable, Dimmable Casambi, Dimmable 1-10V, Dimmable DALI 1, Mains Cut Dimming

Accessories & Power Supply



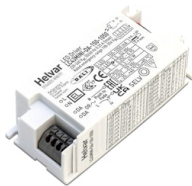
REQUIRED  
Power supply  
Electrical

60.9188  
Continuous current power supply of 13-20W, 110\*/240V - 50/60Hz with current selected through adjustable 200 mA - 13W / 300 mA - 15W / 350 mA - 18W / 400 / 450 / 500 / 550 / 600 / 650 / 700 / 750 / 800 / 850 / 900 mA - 20W. switch. 0/1-10V or push.



REQUIRED  
Power supply  
Electrical

60.9439  
Continuous current power supply, 0/1-10V dimmable, 220/240V - 50/60Hz, 300mA-16W / 350mA-18W / 400mA-21W / 500mA-27W / 600mA-32W / 650mA-35W / 700 / 750 / 800 / 900 / 950 / 1000 / 1050mA-36W



REQUIRED  
Power supply  
Electrical

60.7678  
Continuous current supply source of 240V - 50/60Hz with dimmable Dali 2, Push dimming. 150mA - 7.8W / 200mA - 10.4W / 250mA - 13W / 300mA - 15.6W / 350mA - 18.2W / 400mA - 20.8W / 500mA - 26W / 600mA - 31.2W / 700mA - 36.4W / 750mA - 39W / 800mA - 41.6...



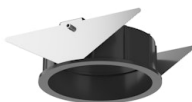
REQUIRED  
Power supply  
Electrical

60.9207  
Casambi continuous current power supply, dimmable 220/240V - 50/60Hz, 300mA - 16W / 350mA - 18,5W / 400mA - 21,5W / 450 mA - 24W / 500mA - 27W / 600mA - 32W / 650 mA - 35W / 700 mA - 36W / 750 / 800 / 900 / 1000 / 1050 / 1200 mA - 38W.



REQUIRED  
Frame  
08.0166.00

Installation Frame No Trim Ø60



REQUIRED  
Frame  
08.0164.14

Installation Frame Trim Ø60



REQUIRED  
Power supply  
Electrical

60.7677



REQUIRED  
Power supply  
Electrical

60.9467

Non dimmable continuous  
current power supply of  
220/240V - 50/60Hz with power  
current selected through  
adjustable with switch. 300mA -  
14.4W / 350mA - 16.8W / 400mA  
- 19.2W / 450mA - 21.6W /  
500mA - 24W / 550mA - 26.4W /  
600mA - 31.2W / 650mA - 31.2W  
/...

Mains dimming 20W Constant  
current power supply, AC phase-  
cut adjustable, trailing & leading  
edge dimming, 220/240V -  
50/60Hz, with dip-switch  
programmable power supply  
current. Output current: 900mA -  
20W / 850mA - 20W / 800mA -  
20W / 750mA - 20W / 70...



OPTIONAL  
Accessory

Mounting

08.0825.00

Orientation Toolkit