

# FLOS

05.2500.14.9S Black

## Light Shadow Pro Ø 45 Fixed Optic Spot - Non IC

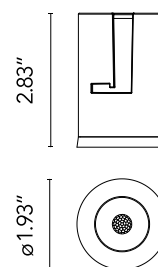
Designed by FLOS Architectural, 2022



LED lighting module, with low glare, to be inserted in the recessed frames (not included), installation through a bayonet system with interchangeable spots. Remote driver not included.

Are you a professional and your project needs consulting and support?

BOOK AN APPOINTMENT



### Main specifications

Mounting	Ceiling recessed
Environments	Indoor dry location
Light Source Type	LED
Light sources included	Yes
LED type	LED array
Lamp category	LED
Number of lamps	1
Power (W)	8
System power (W)	10.3
Source flux (lm)	752
System flux (lm)	611
Efficacy (lm/W)	59

### Physical

Color	Black
Orientation	Fixed
Recessed depth (in)	4.02
Spot diameter (in)	1.93
Length (in)	1.93
Net weight (lb)	0.27
Package height (in)	3.55
Package width (in)	5.52
Package length (in)	4.14
IP internal	20
IP external	54

### Download

Family spec sheet	ZIP
Mounting instructions	PDF

### Photometric Files

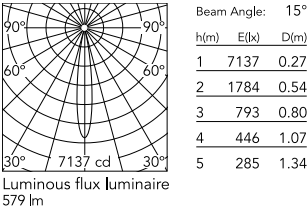
LDT / IES	ZIP
-----------	-----

### Technical Drawings

2D	ZIP
3D	ZIP



## Schematic light drawing



## Photometric

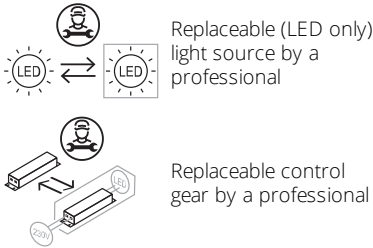
Lighting type	Direct
Light distribution	Symmetric
CCT (K)	2700
CRI>	90
McAdam steps (SDCM)	2
Rf fidelity index	91
Rg gamut index	100
LED Life / Failure Ratio	L90B10>33.000h Tc=85°C
Beam angle C0-180 (°)	15
Beam angle C90-270 (°)	15
Extreme cut off	No
UGR <sub>L</sub>	<10

## Electrical

Forward voltage (V)	12
LED current (mA)	650
Driver	Remote excluded
Dimmable	Yes
Dimming type	Dimmable 0-10V
Dimming interface	Remote Dimmable (Dimmer Not Included)
Precabled	No

## Ecodesign and Energy Labelling

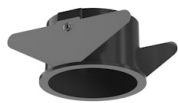
This product contains a light source of energy efficiency class F



## Notes

Please consult the dimensions of the unit: when it does not fit through the recessing hole, an accessible remote location for the unit is required.

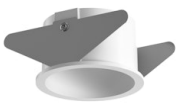
Accessories & Power Supply



REQUIRED  
Frame

Installation

08.0360.14  
Installation Frame Trim for Light  
Shadow Pro Ø 45



REQUIRED  
Frame

Installation

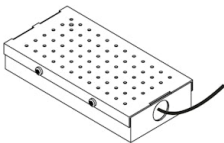
08.0360.40  
Installation Frame Trim for Light  
Shadow Pro Ø 45



REQUIRED  
Frame

Installation

08.0361.00  
Installation Frame No Trim for  
Light Shadow Pro Ø 45



REQUIRED  
Power supply

Electrical

SP25W650MA-10V-A02  
25W , 120-277V , 0-10V Dim to  
1%, programmable to 650mA,  
volts 3-54 Vdc