

Light Shadow Pro Ø 45 Fixed Optic Spot - Airtight IC Rated - JA8 NEW

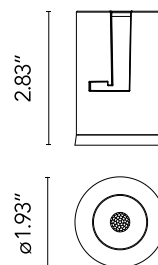
Designed by FLOS Architectural, 2022



IC Rated / Airtight LED lighting module, with low glare, to be inserted in the recessed frames (not included), installation through a bayonet system with interchangeable spots. Remote driver not included.

Are you a professional and your project needs consulting and support?

[BOOK AN APPOINTMENT](#)



Main specifications

Mounting	Ceiling recessed
Environments	Indoor dry location
Light Source Type	LED
Light sources included	Yes
LED type	LED array
Lamp category	LED
Number of lamps	1
Power (W)	8.8
Source flux (lm)	816
System flux (lm)	673
Efficacy (lm/W)	58.52

Physical

Color	Steel
Orientation	Fixed
Recessed depth (in)	4.02
Spot diameter (in)	1.93
Length (in)	1.93
Net weight (lb)	0.27
Package height (in)	3.55
Package width (in)	5.52
Package length (in)	4.14
IP internal	20
IP external	54

Download

Family spec sheet	Download ZIP
Mounting instructions	Download PDF

Photometric Files

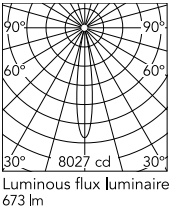
LDT / IES	Download ZIP
-----------	------------------------------

Technical Drawings

2D	Download ZIP
3D	Download ZIP

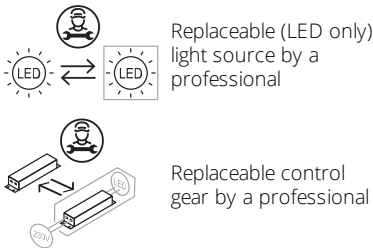


Schematic light drawing



h(m)	E(lx)	D(m)
1	8027	0.28
2	2007	0.55
3	892	0.83
4	502	1.10
5	321	1.38

Ecodesign and Energy Labelling



Photometric

Lighting type	Direct
Light distribution	Symmetric
CCT (K)	2700
CRI>	90
McAdam steps (SDCM)	2
Rf fidelity index	91
Rg gamut index	100
LED Life / Failure Ratio	L90B10>33.000h Tc=85°C
Beam angle C0-180 (°)	16
Beam angle C90-270 (°)	16
Extreme cut off	No
UGR _L	<10

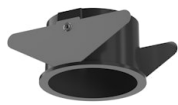
Electrical

Frequency (Hz)	50/60
Forward voltage (V)	12
LED current (mA)	700
Driver	Remote from housing
Dimmable	Yes
Dimming type	Dimmable ELV, Dimmable 0-10V
Dimming interface	Remote Dimmable (Dimmer Not Included)
Precabled	No

Notes

Class 2 Please consult the dimensions of the unit: when it does not fit through the recessing hole, an accessible remote location for the unit is required.

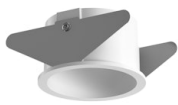
Accessories & Power Supply



REQUIRED
Frame

Installation

08.0360.14
Installation Frame Trim for Light
Shadow Pro Ø 45



REQUIRED
Frame

Installation

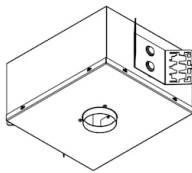
08.0360.40
Installation Frame Trim for Light
Shadow Pro Ø 45



REQUIRED
Frame

Installation

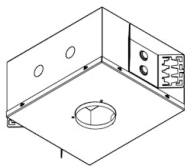
08.0361.00
Installation Frame No Trim for
Light Shadow Pro Ø 45



REQUIRED
Housing and Hanger Bar

Installation

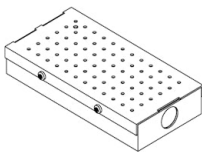
08.7120.00.90
Light Shadow PRO 45 Fixed Trim
Airtight Housing for New
construction. IC Rated - JA8



REQUIRED
Housing and Hanger Bar

Installation

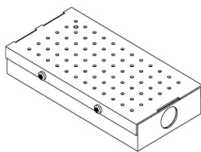
08.7121.00.90
Light Shadow PRO 45 Fixed
Trimless Airtight Housing for New
construction. IC Rated - JA8



REQUIRED
Power supply

Electrical

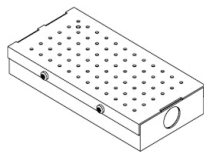
SP20W700MA-PEQ-S01
Lutron EcoSystem Splice Box UL
500mA, 20W, 0.1% dim, 120-
277V



REQUIRED
Power supply

Electrical

SP25W700MA-10V-A01
Splice Box UL 700mA, 25W, 0-
10V Dimmable, 120-277V



REQUIRED
Power supply

Electrical

SP15W700MA-VAR-U01
ERP ESS015W-0700-18 12.6W,
700mA, 10-1VDC, Tri mode dim



REQUIRED
Housing and Hanger Bar

08.1201.00.UL

Bar Hanger Set , Male-Female (set
of 2)