

Light Shadow Pro Ø 45 Fixed Optic Medium - Non IC

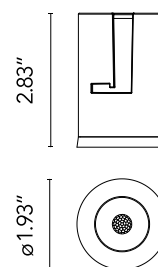
Designed by FLOS Architectural, 2022



LED lighting module, with low glare, to be inserted in the recessed frames (not included), installation through a bayonet system with interchangeable spots. Remote driver not included.

Are you a professional and your project needs consulting and support?

[BOOK AN APPOINTMENT](#)



Main specifications

Mounting	Ceiling recessed
Environments	Indoor dry location
Light Source Type	LED
Light sources included	Yes
LED type	LED array
Lamp category	LED
Number of lamps	1
Power (W)	8
System power (W)	10.3
Source flux (lm)	752
System flux (lm)	618
Efficacy (lm/W)	61

Physical

Color	White
Orientation	Fixed
Recessed depth (in)	4.02
Spot diameter (in)	1.93
Length (in)	1.93
Net weight (lb)	0.27
Package height (in)	3.55
Package width (in)	5.52
Package length (in)	4.14
IP internal	20
IP external	54

Download

Family spec sheet	Download ZIP
Mounting instructions	Download PDF

Photometric Files

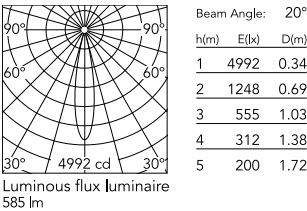
LDT / IES	Download ZIP
-----------	------------------------------

Technical Drawings

2D	Download ZIP
3D	Download ZIP



Schematic light drawing



Photometric

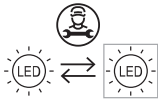
Lighting type	Direct
Light distribution	Symmetric
CCT (K)	2700
CRI>	90
McAdam steps (SDCM)	2
Rf fidelity index	91
Rg gamut index	100
LED Life / Failure Ratio	L90B10>33.000h Tc=85°C
Beam angle C0-180 (°)	20
Beam angle C90-270 (°)	20
Extreme cut off	No
UGR _L	<10

Electrical

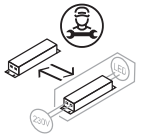
Forward voltage (V)	12
LED current (mA)	650
Driver	Remote excluded
Dimmable	Yes
Dimming type	Dimmable 0-10V
Dimming interface	Remote Dimmable (Dimmer Not Included)
Precabled	No

Ecodesign and Energy Labelling

This product contains a light source of energy efficiency class F



Replaceable (LED only) light source by a professional

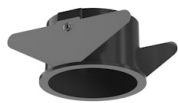


Replaceable control gear by a professional

Notes

Please consult the dimensions of the unit: when it does not fit through the recessing hole, an accessible remote location for the unit is required.

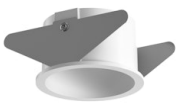
Accessories & Power Supply



REQUIRED
Frame

Installation

08.0360.14
Installation Frame Trim for Light
Shadow Pro Ø 45



REQUIRED
Frame

Installation

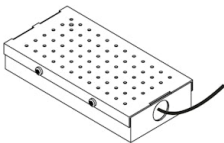
08.0360.40
Installation Frame Trim for Light
Shadow Pro Ø 45



REQUIRED
Frame

Installation

08.0361.00
Installation Frame No Trim for
Light Shadow Pro Ø 45



REQUIRED
Power supply

Electrical

SP25W650MA-10V-A02
25W , 120-277V , 0-10V Dim to
1%, programmable to 650mA,
volts 3-54 Vdc