

FLOS

05.2502.14.9S Black

Light Shadow Pro Ø 45 Fixed Optic Flood - Non IC

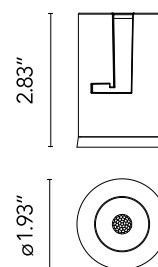
Designed by FLOS Architectural, 2022



LED lighting module, with low glare, to be inserted in the recessed frames (not included), installation through a bayonet system with interchangeable spots. Remote driver not included.

Are you a professional and your project needs consulting and support?

BOOK AN APPOINTMENT



Main specifications

Mounting	Ceiling recessed
Environments	Indoor dry location
Light Source Type	LED
Light sources included	Yes
LED type	LED array
Lamp category	LED
Number of lamps	1
Power (W)	8
System power (W)	10.3
Source flux (lm)	712
System flux (lm)	575
Efficacy (lm/W)	59

Physical

Color	Black
Orientation	Fixed
Recessed depth (in)	4.02
Spot diameter (in)	1.93
Length (in)	1.93
Net weight (lb)	0.27
Package height (in)	3.55
Package width (in)	5.52
Package length (in)	4.14
IP internal	20
IP external	54

Download

Family spec sheet	ZIP
Mounting instructions	PDF

Photometric Files

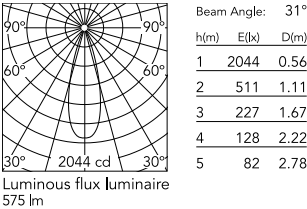
LDT / IES	ZIP
-----------	-----

Technical Drawings

2D	ZIP
3D	ZIP



Schematic light drawing



Photometric

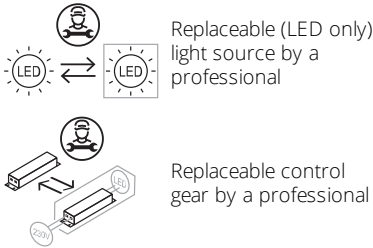
Lighting type	Direct
Light distribution	Symmetric
CCT (K)	2700
CRI>	90
McAdam steps (SDCM)	2
Rf fidelity index	91
Rg gamut index	100
LED Life / Failure Ratio	L90B10>33.000h Tc=85°C
Beam angle C0-180 (°)	31
Beam angle C90-270 (°)	31
Extreme cut off	No
UGR _L	<10

Electrical

Forward voltage (V)	12
LED current (mA)	650
Driver	Remote excluded
Dimmable	Yes
Dimming type	Dimmable 0-10V
Dimming interface	Remote Dimmable (Dimmer Not Included)
Precabled	No

Ecodesign and Energy Labelling

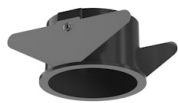
This product contains a light source of energy efficiency class F



Notes

Please consult the dimensions of the unit: when it does not fit through the recessing hole, an accessible remote location for the unit is required.

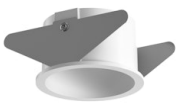
Accessories & Power Supply



REQUIRED
Frame

Installation

08.0360.14
Installation Frame Trim for Light
Shadow Pro Ø 45



REQUIRED
Frame

Installation

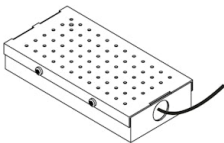
08.0360.40
Installation Frame Trim for Light
Shadow Pro Ø 45



REQUIRED
Frame

Installation

08.0361.00
Installation Frame No Trim for
Light Shadow Pro Ø 45



REQUIRED
Power supply

Electrical

SP25W650MA-10V-A02
25W , 120-277V , 0-10V Dim to
1%, programmable to 650mA,
volts 3-54 Vdc