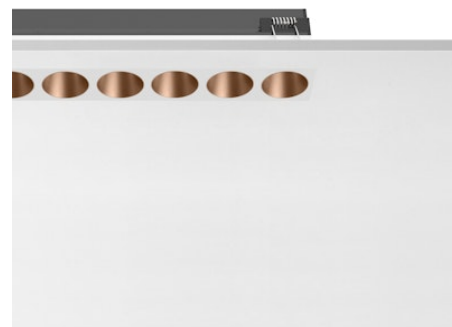


Light Shadow Fixed No Trim Dali Version 8 Spots Optic Spot

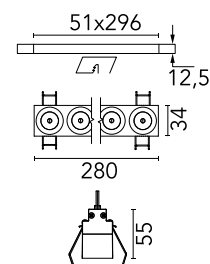
Designed by FLOS Architectural, 2022



Recessed integrated luminaire with 8 LED lighting spots. Remote power supply included (220-240V).

Are you a professional and your project needs consulting and support?

[BOOK AN APPOINTMENT](#)



Main specifications

Mounting	Ceiling recessed
Environments	Indoor dry location
Light source type	LED
Light sources included	Yes
LED type	Power LED
Lamp category	LED
Number of lamps	1
Power (W)	21.6
Source flux (lm)	2160
Lumen Output (lm)	1577

Physical

Colour	White/Copper
Trim	No
Orientation	Fixed
Recessed depth (mm)	75
Length (mm)	280
Net weight (kg)	0.5
Package height (mm)	10
Package width (mm)	14
IP internal	20
IP external	55

Download

[Mounting instructions](#) [↓ PDF](#)

[Mounting instructions](#) [↓ PDF](#)

Photometric Files

[LDT / IES](#) [↓ ZIP](#)

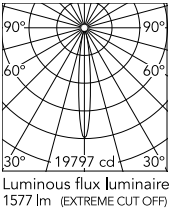
Technical Drawings

[2D](#) [↓ ZIP](#)

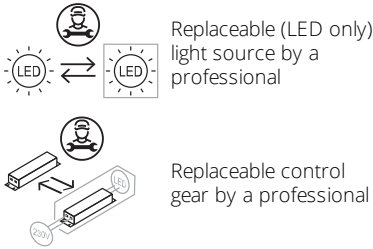
[3D](#) [↓ ZIP](#)



Schematic light drawing



Ecodesign and Energy Labelling



Photometric

Lighting type	Direct
Light distribution	Symmetric
CCT (K)	2700
CRI>	90
McAdam steps (SDCM)	3
LED Life / Failure Ratio	L80B20 >50.000h (Tc=85°C)
Beam angle C0-180 (°)	12
Beam angle C90-270 (°)	12
Extreme cut off	No

Electrical

Insulation class	II
Frequency (Hz)	50/60
Forward voltage (V)	23.2
LED current (mA)	900
Power supply	Remote included
Dimmable	Yes
Power supply type	Dimmable DALI 2
Dimming range (%)	1-100
Dimming interface	Remote Dimmable (Dimmer Not Included)

Notes

It requires a pre-installation frame, to be ordered separately.

Accessories & Power Supply

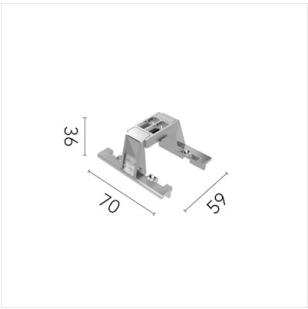


REQUIRED
Frame

Installation

08.0512.00

Pre-installation No Trim Frame 8L
Fix



OPTIONAL
Accessory

Installation

08.0052.90

Accessory for mounting of No
Trim Fix continuous line.