

FLOS

03.8367.40ACB White/Black

Light Shadow Fixed No Trim Casambi Version 8 Spots Optic Wide Flood

Designed by FLOS Architectural, 2022



Recessed integrated luminaire with 8 LED lighting spots. Remote power supply included (220-240V).

Are you a professional and your project needs consulting and support?

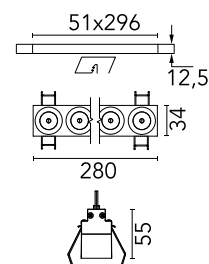
BOOK AN APPOINTMENT

Main specifications

Mounting	Ceiling recessed
Environments	Indoor dry location
Light source type	LED
Light sources included	Yes
LED type	Power LED
Lamp category	LED
Number of lamps	1
Power (W)	20.9
System power (W)	21.6
Source flux (lm)	2160
Lumen Output (lm)	1773

Physical

Colour	White/Black
Trim	No
Orientation	Fixed
Recessed depth (mm)	75
Length (mm)	280
Net weight (kg)	0.5
IP internal	20
IP external	55



Download

Mounting instructions [Download PDF](#)

Mounting instructions [Download PDF](#)

Photometric Files

LDT / IES [Download ZIP](#)

Technical Drawings

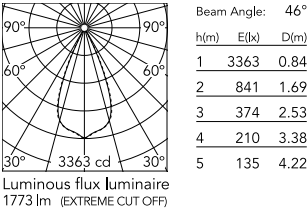
2D [Download ZIP](#)

3D [Download ZIP](#)

Bim [Download ZIP](#)



Schematic light drawing



Ecodesign and Energy Labelling

Replaceable (LED only) light source by a professional

Replaceable control gear by a professional

Photometric

Lighting type	Direct
Light distribution	Symmetric
CCT (K)	2700
CRI>	90
McAdam steps (SDCM)	3
LED Life / Failure Ratio	L80B20 >50.000h (Tc=85°C)
Beam angle C0-180 (°)	45
Beam angle C90-270 (°)	45
Extreme cut off	No
UGR _L	<10

Electrical

Insulation class	II
Frequency (Hz)	50/60
Main voltage (Vac)	220-240
Alternating current voltage (Vac)	230
LED current (mA)	900
Power supply	Remote included
Dimmable	Yes
Power supply type	Dimmable Casambi

Notes

It requires a pre-installation frame, to be ordered separately.

Accessories & Power Supply

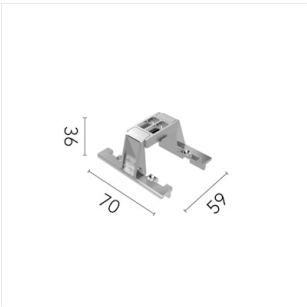


REQUIRED
Frame

Installation

08.0512.00

Pre-installation No Trim Frame 8L
Fix



OPTIONAL
Accessory

Installation

08.0052.90

Accessory for mounting of No
Trim Fix continuous line.