



## Light Shadow Fixed No Trim 2 Spots Optic Wide Flood

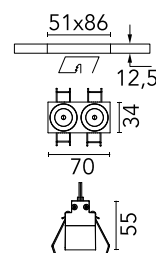
Designed by FLOS Architectural, 2022



Recessed integrated luminaire with 2 LED lighting spots. Remote power supply included (220-240V).

Are you a professional and your project needs consulting and support?

[BOOK AN APPOINTMENT](#)



### Main specifications

Mounting	Ceiling recessed
Environments	Indoor dry location
Light source type	LED
Light sources included	Yes
LED type	Power LED
Lamp category	LED
Number of lamps	1
Power (W)	7
Source flux (lm)	570
Lumen Output (lm)	462

### Physical

Colour	Black/White
Trim	No
Orientation	Fixed
Recessed depth (mm)	150
Length (mm)	70
Net weight (kg)	0.25
IP internal	20
IP external	55

### Download

Mounting instructions	<a href="#">Download PDF</a>
Mounting instructions	<a href="#">Download PDF</a>

### Photometric Files

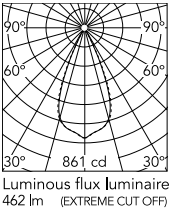
LDT / IES	<a href="#">Download ZIP</a>
-----------	------------------------------

### Technical Drawings

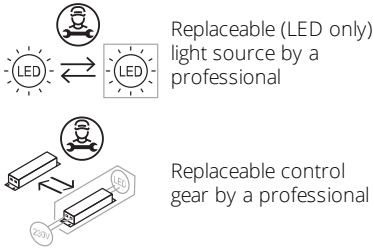
2D	<a href="#">Download ZIP</a>
3D	<a href="#">Download ZIP</a>
Bim	<a href="#">Download ZIP</a>



## Schematic light drawing



## Ecodesign and Energy Labelling



## Photometric

Lighting type	Direct
Light distribution	Symmetric
CCT (K)	3000
CRI>	90
McAdam steps (SDCM)	3
LED Life / Failure Ratio	L80B20 >50.000h (Tc=85°C)
Beam angle C0-180 (°)	45
Beam angle C90-270 (°)	45
UGR <sub>L</sub>	<16

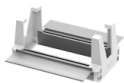
## Electrical

Insulation class	II
Frequency (Hz)	50/60
Main voltage (Vac)	220-240
Alternating current voltage (Vac)	230
Power supply	Remote included
Dimmable	No
Power supply type	Non Dimmable

## Notes

It requires a pre-installation frame, to be ordered separately.

Accessories & Power Supply

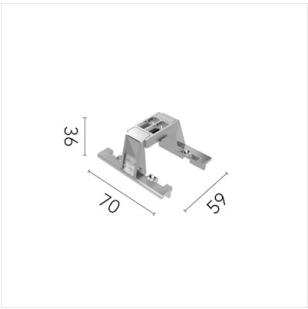


REQUIRED  
Frame

Installation

08.0510.00

Pre-installation No Trim Frame 2L  
Fix



OPTIONAL  
Accessory

Installation

08.0052.90

Accessory for mounting of No  
Trim Fix continuous line.