

Light Shadow Fixed No Trim 12 Spots Optic Wide Flood - Non IC

Designed by FLOS Architectural, 2022



Recessed integrated luminaire with 12 LED lighting spots. Remote power supply.

Are you a professional and your project needs consulting and support?

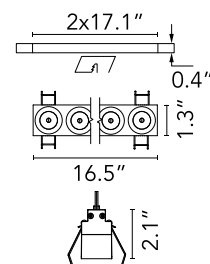
[BOOK AN APPOINTMENT](#)

Main specifications

Mounting	Ceiling recessed
Environments	Indoor dry location
Light Source Type	LED
Light sources included	Yes
LED type	Power LED
Lamp category	LED
Number of lamps	1
Power (W)	32.4
Source flux (lm)	3240
System flux (lm)	2652

Physical

Color	Black/White
Trim	No
Orientation	Fixed
IP internal	20
IP external	55



Download

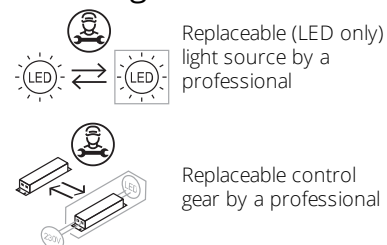
Family spec sheet [ZIP](#)
Mounting instructions [PDF](#)

Photometric Files

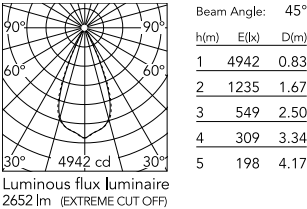
LDT / IES [ZIP](#)



Ecodesign and Energy Labelling



Schematic light drawing



Photometric

Lighting type	Direct
Light distribution	Symmetric
CCT (K)	2700
CRI>	90
McAdam steps (SDCM)	3
LED Life / Failure Ratio	L80B20 >50.000h (Tc=85°C)
Beam angle C0-180 (°)	45
Beam angle C90-270 (°)	45
UGR _L	<10

Electrical

Forward voltage (V)	36
LED current (mA)	900
Driver	Integral - Splice Box
Dimmable	Yes
Dimming type	Dimmable 1-10V
Dimming interface	Remote Dimmable (Dimmer Not Included)

Notes

It requires a pre-installation frame, to be ordered separately.

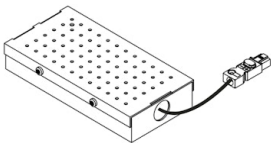
Accessories & Power Supply



REQUIRED
Frame

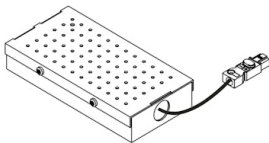
Installation

08.0513.00.90
Light Shadow 12 Spots 5/8"
Frame Fixed Trimless



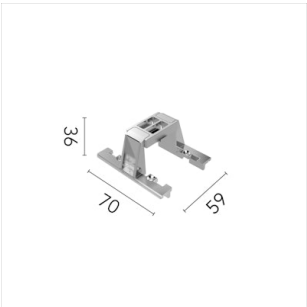
REQUIRED
Power supply

SP40W900MA-120-A01
Splice Box7"x3.59"x1.25", 900mA
, 40W, 0-10V Dimmable, Thermal
120V



REQUIRED
Power supply

SP40W900MA-277-A01
Splice Box7"x3.59"x1.25", 900mA
, 40W, 0-10V Dimmable, Thermal
277V



OPTIONAL
Accessory

Installation

08.0052.90
Accessory for mounting of No
Trim Fix continuous line.