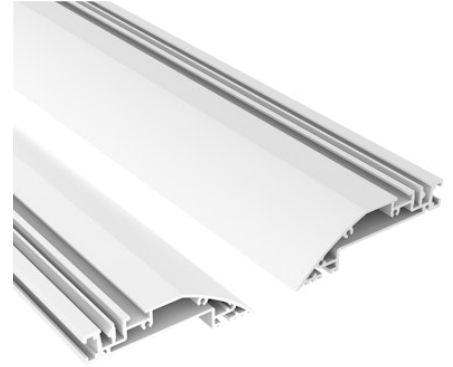


FLOS

08.8721.30 White

Light Cut Mini Aluminium Profile 2 unit kit/2000 mm. Channel 70/140 Installation

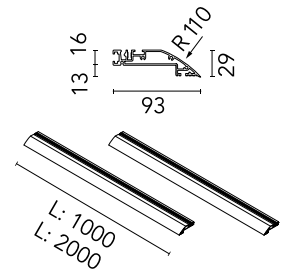
Designed by FLOS Architectural, 2013



Structural system in aluminium to integrate in plasterboard ceilings. It allows incorporation of projectors. Channel installation consists of 1 or 2 meter profiles, double inside and outside corners. It is possible to cut the profiles to any size.

Are you a professional and your project needs consulting and support?

[BOOK AN APPOINTMENT](#)



Main specifications

Mounting	Ceiling recessed
Environments	Indoor dry location

Physical

Colour	White
Trim	No
Length (mm)	2000
Net weight (kg)	5

Download

[Mounting instructions](#)

[↓ PDF](#)



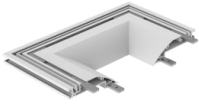
Electrical

Emergency No

Notes

Can only be installed in 12.5 mm thick plaster-board.

Accessories & Power Supply



REQUIRED Profile

08.8705.30

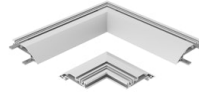
Light Cut Mini Endcap. Channel
70 Installation



REQUIRED Profile

08.8706.30

Light Cut Mini Endcap. Channel
140 Installation



REQUIRED Corner

08.8707.30

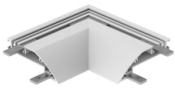
Light Cut Mini Corner. Channel 70
Installation



REQUIRED Corner

08.8708.30

Light Cut Mini Corner. Channel
140 Installation



REQUIRED Corner

08.8709.30

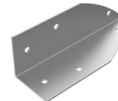
Light Cut Mini Corner Inside.
Perimetral Installation



REQUIRED Corner

08.8710.30

Light Cut Mini Corner Outside.
Perimetral Installation



REQUIRED Corner

08.8711.00

Light Cut Mini accessory for
vertical corner. Perimetral
Installation