

# FLOS

08.8702.30 White

## Light Cut Mini Aluminium Profile 1 unit/2000 mm. Perimetral Installation

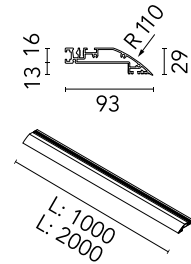
Designed by FLOS Architectural, 2013



Structural system in aluminium to integrate in plasterboard ceilings. It allows incorporation of projectors. Perimetral installation consists of 1 or 2 meter profiles, inside and outside corners. It is possible to cut the profiles to any size.

Are you a professional and your project needs consulting and support?

[BOOK AN APPOINTMENT](#)



### Main specifications

Mounting	Ceiling recessed
Environments	Indoor dry location

### Physical

Colour	White
Trim	No
Length (mm)	2000
Net weight (kg)	2.50

### Download

[Mounting instructions](#)

[PDF](#)



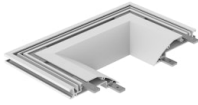
### Electrical

Emergency No

### Notes

Can only be installed in 12.5 mm thick plaster-board.

## Accessories & Power Supply



REQUIRED  
Profile

08.8705.30

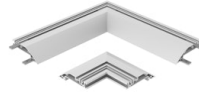
Light Cut Mini Endcap. Channel  
70 Installation



REQUIRED  
Profile

08.8706.30

Light Cut Mini Endcap. Channel  
140 Installation



REQUIRED  
Corner

08.8707.30

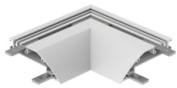
Light Cut Mini Corner. Channel 70  
Installation



REQUIRED  
Corner

08.8708.30

Light Cut Mini Corner. Channel  
140 Installation



REQUIRED  
Corner

08.8709.30

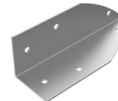
Light Cut Mini Corner Inside.  
Perimetral Installation



REQUIRED  
Corner

08.8710.30

Light Cut Mini Corner Outside.  
Perimetral Installation



REQUIRED  
Corner

08.8711.00

Light Cut Mini accessory for  
vertical corner. Perimetral  
Installation