

FLOS

08.8701.30 White

Light Cut Mini Aluminium Profile 1 unit/1000 mm. Perimetral Installation

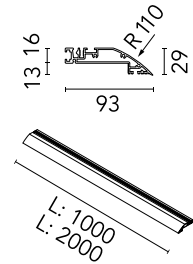
Designed by FLOS Architectural, 2013



Structural system in aluminium to integrate in plasterboard ceilings. It allows incorporation of projectors. Perimetral installation consists of 1 or 2 meter profiles, inside and outside corners. It is possible to cut the profiles to any size.

Are you a professional and your project needs consulting and support?

[BOOK AN APPOINTMENT](#)



Main specifications

Mounting	Ceiling recessed
Environments	Indoor dry location

Physical

Colour	White
Trim	No
Length (mm)	1000
Net weight (kg)	1.22

Download

[Mounting instructions](#)

[↓ PDF](#)



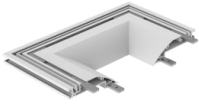
Electrical

Emergency No

Notes

Can only be installed in 12.5 mm thick plaster-board.

Accessories & Power Supply



REQUIRED
Profile

08.8705.30

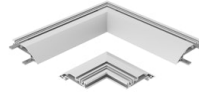
Light Cut Mini Endcap. Channel
70 Installation



REQUIRED
Profile

08.8706.30

Light Cut Mini Endcap. Channel
140 Installation



REQUIRED
Corner

08.8707.30

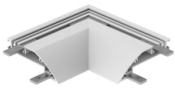
Light Cut Mini Corner. Channel 70
Installation



REQUIRED
Corner

08.8708.30

Light Cut Mini Corner. Channel
140 Installation



REQUIRED
Corner

08.8709.30

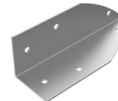
Light Cut Mini Corner Inside.
Perimetral Installation



REQUIRED
Corner

08.8710.30

Light Cut Mini Corner Outside.
Perimetral Installation



REQUIRED
Corner

08.8711.00

Light Cut Mini accessory for
vertical corner. Perimetral
Installation